

# **TENDER DOCUMENT**

**EXECUTION OF THE APPROVED DESIGNED & BOQS FOR THE  
STUDENT SERVICE CENTRE  
LOCATED AT THE ISLAMIA UNIVERSITY OF BAHAWALPUR.**

- ✓ Invitation to Bid
- ✓ Instructions to Bidders
- ✓ Technical Specifications
- ✓ Bid Forms
- ✓ Conditions of Contract

**The Islamia University of Bahawalpur**  
**University Chowk, Gulshan Colony,**  
**Bahawalpur, Punjab 63100.**

**Execution of Student Service Centre  
Tender Documents**



## INVITATION FOR BIDS

Date: \_\_\_\_\_

Bid Reference No.: \_\_\_\_\_

1. Islamia University Bahawalpur requests Tender Bids in sealed envelopes. Proponents applying for bids should submit two separate bids/envelopes for Financial Proposal and Technical Proposal. Single stage – two envelope procedure.
2. The Technical Proposal should contain all the bid items without quoting the price and must list firm's clientele, details of past project and after-sales service. Financial bids of Firms not pre-qualified on Technical basis will not be opened. The selected firms would be responsible for complete execution of the work and would hand over it in satisfactory running state within stipulated time.
3. The bidding document will be given in the form of hard copy to the respective bidder.
4. Every bid should be accomplished by bid participation fee of Rs. 2,000/. In favor of Islamia University Bahawalpur in the form of bank draft.
5. The bidder should bid for complete lot.
6. All bids must be accompanied by a call deposit (CDR) of two percent (5%) of the total bid amount. The bids along with the CDR must be delivered to the office of Islamia University Bahawalpur on or 02:00 PM, Dated: 03.02.2021. The Technical bids will be publicly opened in the office of Islamia University Bahawalpur, at 02:30 P.M Dated: 03.02.2021.
7. Bidders shall submit Bids, which comply with the bidding documents. Alternative bids will not be considered.
8. Islamia University Bahawalpur, will not be responsible for any costs or expenses incurred by bidders in connection with the preparation or delivery of bids.
9. As authority competent to accept the tender, the purchaser reserves the right to accept or reject one or all the tenders without assigning any reason thereof.
10. All prices quoted must include all Taxes applicable, such as GST, Income Tax, etc.
11. Failure to complete work in stipulated time period will invoke penalty. In addition to that, two percent (5%) Call Deposit (CDR) amount will be forfeited and the company will be blacklisted.
12. Bid will not be opened / cater / entertain without the following.
  - a. Unattended bid (without company representative)

**Execution of Student Service Centre  
Tender Documents**

- b. Without CDR
  - c. Without tender document fee.
  - d. Less than cited amount of CDR.
  - e. If any company / party / brand is not up to the mark.
13. Islamia University Bahawalpur can accept / reject any Bid without assigning any reason.
14. Decision of Islamia University Bahawalpur tender Consultant with consent of Committee for Student Service Centre will be final and not to be challenged.
15. In case of any query or clarification, please feel free to contact in black & white with undersigned, during office hours.
16. The selected contractor would be responsible for complete execution and would hand over it in satisfactory running state within **8-10** weeks from the issuance of Purchase/Work Order.
17. Execution of the said tendered work will be carried out at following address:-

**Principal Officer Estate Care The Islamia University of Bahawalpur, Pakistan.**

**Execution of Student Service Centre  
Tender Documents**

**Scope of Work:**

Islamia University Bahawalpur has an approved Design Brief and BOQ for its student service center. Located at Islamia University, Bahawalpur approx. 7000sqft area, the bidders are requested to execute the said work as defined in the bid document.

**Opening and Evaluation of Bid**

**1. Evaluation and Comparison of Bids**

The bids will be evaluated in two steps. The first step would ensure that technical requirements are met by the bidders as per the technical evaluation criteria. In the second step financial proposals of only those firms which meet the technical requirements will be evaluated. The bid would be evaluated according to the following percentage in technical proposal:

- I. 70 percent (70%) or more than 70 percent (70%) marks Qualify
- II. Less than 70 percent (70%) marks Disqualify.
- III. 30 percent (30%) weightage for financial proposal.

**1.1 Technical Evaluation**

It will be examined in detail whether the design concept/ work/ services/ 3d visualizations, material offered by the bidder comply with the design theme and specifications of the bidding documents. Bidders all document/ work/ services/ material will be critically examined in view of the tender document, only same quality or above will be considered successful. Any material/ work/ service etc, less than the Tender document will be cancelled at any time / any stage. All other technical information submitted with the bid will also be reviewed deeply.

**1.2 Commercial Evaluation**

It will be examined in detail whether the bid comply with the specified Conditions of Contract of the bidding documents. It is expected that no minor/ major deviation/stipulation shall be taken by the bidder.

**1.3 Parameters of Technical & Financial Evaluation**

The material/ work/ services will be evaluated according to the approved & provided BOQs

*Only those bids will be considered which are 100% in-compliance with the tender specifications..*

**1.3.1 Parameters of Technical & Financial Evaluation**

The bid will be disqualified, if the company is not registered in Pakistan or if the company has been blacklisted by any Government department or by Government of Punjab (an affidavit in this regards is required).

## Execution of Student Service Centre

### Tender Documents

If the offered work/ services/ material does not meet 100% of the required specification, the bid will stand disqualified. Companies may offer specification over and above the requirement at their own will.

The bid will be disqualified, if the company is offering non branded items. Islamia University Bahawalpur intends to procure established international and local branded items only. A certificate from relevant Brand Patent Registration Office may be requested by Islamia University Bahawalpur.

**A Technical Proposal of a Bidder will be considered responsive only if it satisfies the eligibility criteria's mentioned below, failing to do so, the bid will stand rejected and the financial proposal of the bidder will be returned to the bidder unopened;**

Basic eligibility criteria:

Every bidder MUST meet the basic eligibility criteria for further evaluation. Documentary prove required.

- i. Company must be registered in Pakistan.
- ii. Company must have Tax certificate/ NTN number/ registered with taxation authority/ (ies).
- iii. Company must be registered with Pakistan Employer's Engineering Council (PEC) in C1 to C3 category with relevant codes.
- iv. Company must have at least three (03) years relevant experience. (Documentary prove/ evidence required).
- v. Company must have a Design wing with foreign qualified Architects and Designers with at least 10 years of working experience.

*Note: Failure to fulfill the basic eligible criteria the bidder will lead to disqualification.*

#### **Evaluation Criteria:**

After the qualification in basic eligibility criteria the Companies/ firms/ contractors will be further evaluated in marks.

Every bidder must provide the documentary evidence, without proper documentation/ certificate Islamia University Bahawalpur will not cater any bid for marking.

**Execution of Student Service Centre**

**Tender Documents**

| Evaluation Parameter For Bids  | Total Marks | Questionnaire   |
|--|-------------|---|
| <b>Technical Proposal</b><br><b>(Qualification 420/600)</b>                                    | <b>600</b>  | Add design wing criteria  |
| Company Experience in terms of execution of work<br>(This criteria is for Pakistan based only) | 100         | The company must have experience in hand of similar projects;<br>More than 05 projects = 100 marks<br>More than 04 projects = 75 marks<br>More than 03 projects = 50 marks<br>More than 02 projects = 25 marks  |
| Duration of Business in Pakistan   | 100         | Total Experience of the company in same business in which they are dealing in<br>More than 07 year 100 marks<br>More than 05 year 75 marks<br>More than 03 years 50 marks   |
| Technical Capacity<br>(Attach CV's)  | 100         |   |
| Experience of Project Manager  | 50          | 05-07 years = 20<br>08-10 years = 40<br>11-15 years = 50  |
| Experience of lead Architect   | 50          | 03-05 years = 20<br>06-10 years = 40<br>More than 10 year = 50  |
| In House design wings  | 100         | Qualified Architect (PhD)<br>(5 to 10 year experience ) = 50<br>Public Health Engineer<br>(5 to 10 year experience ) =15<br>Electrical Engineer<br>(5 year experience ) =15<br>HVAC Consultant<br>(5 to 10 year experiences ) = 15<br>Expert draft man / Visualizer<br>(5 to 10 year experiences ) =5   |
| Financial Strength (Rs)  | 100         | For last 3 years, assessed by the audited financial documents.<br>Average annual revenue in Pakistan more than 10 million = 25 marks<br>Average annual revenue in Pakistan more than 20 million 50 marks<br>Average annual revenue in Pakistan more than 30 million 75 marks<br>Average annual revenue in Pakistan more than 40 million 100 marks |

**Execution of Student Service Centre**

**Tender Documents**

|  |     |  |
|--|-----|--|
| Pakistan Employer's Engineering Council Registration | 100 | Pakistan Employer's Engineering Council Registration category C-1 above= 100 marks<br>Pakistan Employer's Engineering Council Registration category C-2 = 90 marks<br>Pakistan Employer's Engineering Council Registration category C-3 = 80 marks<br>Pakistan Employer's Engineering Council Registration category C-4 = 70 marks<br>Pakistan Employer's Engineering Council Registration category C-5 = 60 marks |
|--|-----|--|



**Execution of Student Service Centre  
Tender Documents**

**Specimen for Bidders  
(Fill by the bidder)**

**(Every bidder must fill this form and attach relevant certificates along with this Performa)**

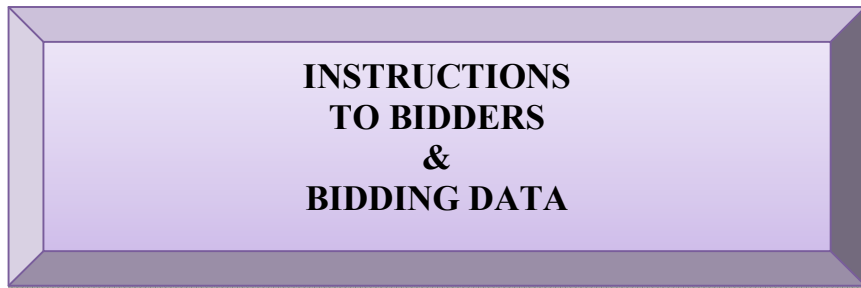
| Evaluation Parameter For Bids  | Total Marks | Questionnaire   |  |
|--|-------------|---|--|
| <b>Technical Proposal</b><br>(Qualification 420/600)   | <b>600</b>  | Add design wing criteria  |  |
| Company Experience in terms of execution of work<br>(This criteria is for Pakistan based only) | 100         | The company must have experience in hand of similar projects;<br>More than 05 projects = 100 marks<br>More than 04 projects = 75 marks<br>More than 03 projects = 50 marks<br>More than 02 projects = 25 marks  |  |
| Duration of Business in Pakistan   | 100         | Total Experience of the company in same business in which they are dealing in<br>More than 07 year 100 marks<br>More than 05 year 75 marks<br>More than 03 years 50 marks   |  |
| Technical Capacity<br>(Attach CV's)  | 100         |   |  |
| Experience of Project Manager  | 50          | 05-07 years = 20<br>08-10 years = 40<br>11-15 years = 50  |  |
| Experience of lead Architect   | 50          | 03-05 years = 20<br>06-10 years = 40<br>More than 10 year = 50  |  |
| In House design wings  | 100         | Qualified Architect (PhD)<br>(5 to 10 year experience ) = 50<br>Public Health Engineer<br>(5 to 10 year experience ) =15<br>Electrical Engineer<br>(5 year experience ) =15<br>HVAC Consultant<br>(5 to 10 year experiences ) = 15<br>Expert draft man / Visualizer<br>(5 to 10 year experiences ) =5   |  |
| Financial Strength (Rs)  | 100         | For last 3 years, assessed by the audited financial documents.<br>Average annual revenue in Pakistan more than 10 million = 25 marks<br>Average annual revenue in Pakistan more than 20 million 50 marks<br>Average annual revenue in Pakistan more than 30 million 75 marks<br>Average annual revenue in Pakistan more than 40 million 100 marks |  |

**Execution of Student Service Centre**

**Tender Documents**

|  |     |  |
|--|-----|--|
| Pakistan Employer's Engineering Council Registration | 100 | Pakistan Employer's Engineering Council Registration category C-1 above= 100 marks<br>Pakistan Employer's Engineering Council Registration category C-2 = 90 marks<br>Pakistan Employer's Engineering Council Registration category C-3 = 80 marks<br>Pakistan Employer's Engineering Council Registration category C-4 = 70 marks<br>Pakistan Employer's Engineering Council Registration category C-5 = 60 marks |
|--|-----|--|

**Execution of Student Service Centre  
Tender Documents**



## **INSTRUCTIONS TO BIDDERS**

(Note: These Instructions to Bidders (IB) along with Bidding Data will not be part of Contract and will cease to have effect once the Contract is signed).

### **A. GENERAL**

#### **IB.1 Scope of Bid & Source of Funds**

##### **1.1 Scope of Bid**

The Employer as defined in the Bidding Data (hereinafter called “the Employer”) wishes to receive Bids for the Works summarized in the Specific Work Data in Schedule B to Bid.(Hereinafter referred to as “the Works”).

Bidders must quote for the complete scope of work. Any Bid covering partial scope of work will be rejected as non-responsive.

##### **1.2 Source of Funds**

The Employer has arranged funds from its own sources.

#### **IB.2 Eligible Bidders**

2.1 Bidding is open to all firms and persons meeting the following requirements:

- a) Duly licensed by the Pakistan Employer’s Engineering Council (PEC) in the appropriate category for value of Works.
- b) Should have relevant experience.
- c) Should have in house Design wing along with design software capabilities.

#### **IB.3 Cost of Bidding**

3.1 The bidder shall bear all costs associated with the preparation and submission of its bid and the Employer will in no case be responsible or liable for those costs, regardless of the conduct or outcome of the bidding process.

### **B. BIDDING DOCUMENTS**

**Execution of Student Service Centre  
Tender Documents**

**IB.4 Contents of Bidding Documents**

4.1 In addition to Invitation for Bids, the Bidding Documents are those stated below, and should be read in conjunction with any Addendum issued in accordance with Sub-Clause IB.6.1.

1. Instructions to Bidders & Bidding Data
2. Form of Bid & Schedules to Bid

Schedules to Bid comprise the following:

- (i) Schedule A: Schedule of Prices
- (ii) Schedule B: Specific Works Data
- (iii) Schedule C: Works to be Performed by Subcontractors
- (iv) Schedule D: Proposed Program of Works
- (v) Schedule E: Method of Performing Works
- (vi) Schedule F: Integrity Pact

3. Conditions of Contract & Contract Data
4. Standard Forms:
  - (i) Form of Bid Security
  - (ii) Form of Performance Security
  - (iii) Form of Contract Agreement
  - (iv) Form of Bank Guarantee for Advance Payment
5. Specifications
6. Design Brief & Drawings, if any

**IB.5 Clarification of Bidding Documents**

1.1 A prospective bidder requiring any clarification(s) in respect of the Bidding Documents may notify the Employer at the Consultant with the consent of Committee address indicated in the Bidding Data.

1.2 The Employers Architect will respond to any request for clarification which it receives earlier than five(05) days prior to the deadline for the submission of Bids. Copies of the Employer' s Architect response will be forwarded to all prospective bidders, at least five (5) days prior to dead line for submission of Bids, who have received the Bidding Documents including a description of the enquiry but without identifying its source.

**Execution of Student Service Centre  
Tender Documents**

**IB.6 Amendment of Bidding Documents**

- 6.1 At any time prior to the deadline for submission of Bids, the Employer may, for any reason, whether at his own initiative or in response to a clarification requested by a prospective bidder, modify the Bidding Documents by issuing addendum.
- 6.2 Any addendum thus issued shall be part of the Bidding Documents pursuant to Sub-Clause hereof, and shall be communicated in writing to all purchasers of the Bidding Documents. Prospective bidders shall acknowledge receipt of each addendum in writing to the Employer.
- 6.3 To afford prospective bidders reasonable time in which to take an addendum into account in preparing their Bids, the Employer may at its discretion extend the deadline for submission of Bids.

**C. PREPARATION OF BIDS**

**IB.7 Language of Bid**

- 7.1 The bid prepared by the bidder and all correspondence and documents relating to the Bid, exchanged by the bidder and the Employer shall be written in the English language, provided that any printed literature furnished by the bidder may be written in another language so long as accompanied by an English translation of its pertinent passages in which case, for purposes of interpretation of the Bid, the English translation shall govern.

**IB.8 Documents Comprising the Bid**

- 8.1 The bid prepared by the bidder shall comprise the following components:
- a. Covering Letter
  - b. Form of Bid duly filled, signed and sealed, in accordance with Sub-Clause IB.14.3.
  - c. Schedules (A to F) to Bid duly filled and initialed, in accordance with the instructions contained therein & in accordance with Sub-Clause IB14.3.
  - d. Bid Security furnished in accordance with Clause IB.13.
  - e. Power of Attorney in accordance with Sub-Clause IB 14.5.
  - f. Documentary evidence in accordance with Clause IB.11
  - g. Documentary evidence in accordance with Clause IB.12.

**Execution of Student Service Centre  
Tender Documents**

**IB.9 Sufficiency of Bid**

9.1 Each bidder shall satisfy himself before Bidding as to the correctness and sufficiency of his Bid and of the rates and prices entered in the Schedule of Prices, which rates and prices shall except in so far as it is otherwise expressly provided in the Contract, cover all his obligations under the Contract and all matters and things necessary for the proper completion of the Works.

9.2 The bidder is advised to obtain for himself at his own cost and responsibility all information that may be necessary for preparing the bid and entering into a Contract for execution of the Works.

**IB.10 Bid Prices, Currency of Bid and Payment**

10.1 The bidder shall fill up the Schedule of Prices (Schedule A to Bid) indicating the unit rates and prices of the Works to be performed under the Contract. Prices in the Schedule of Prices shall be entered keeping in view the instructions contained in the Preamble to Schedule of Prices.

10.2 Unless otherwise stipulated in the Conditions of Contract, prices quoted by the bidder shall remain fixed during the bidder's performance of the Contract and not subject to variation on any account.

10.3 The unit rates and prices in the Schedule of Prices shall be quoted by the bidder in the currency as stipulated in Bidding Data.

**IB.11 Documents Establishing Bidder's Eligibility and Qualifications**

11.1 Pursuant to Clause IB.8, the bidder shall furnish, as part of its bid, documents establishing the bidder's eligibility to bid and its qualifications to perform the Contract if its bid is accepted.

11.2 Bidder/Manufacturer must possess and provide evidence of its capability and the experience as stipulated in Bidding Data and the Qualification Criteria stipulated in the Bidding Documents.

**IB.12 Documents Establishing Works' Conformity to Bidding Documents**

12.1 The documentary evidence of the Works' conformity to the Bidding Documents may be in the form of literature, drawings and data and the bidder shall furnish documentation as set out in Bidding Data.



**Execution of Student Service Centre  
Tender Documents**

12.2 The bidder shall note that standards for workmanship, material and equipment, and references to brand names or catalogue numbers, if any, designated by the Employer in the Technical Provisions are intended to be descriptive only and not restrictive.

**IB.13 Bid Security**

13.1 Each bidder shall furnish, as part of his bid, at the option of the bidder, a Bid Security in the amount stipulated in Bidding Data in Pak. Rupees in the form of Deposit at Call or a Bank Guarantee issued by a Scheduled Bank in Pakistan in favor of the Employer valid for a period up to twenty eight (28) days beyond the bid validity date.

13.2 Any bid not accompanied by an acceptable Bid Security shall be rejected by the Employer as non-responsive.

13.3 The bid securities of unsuccessful bidders will be returned upon award of contract to the successful bidder or on the expiry of validity of Bid Security whichever is earlier.

13.4 The Bid Security of the successful bidder will be returned when the bidder has furnished the required Performance Security, pursuant to Clause IB.21 and signed the Contract Agreement, pursuant to Sub-Clauses IB.20.2 & 20.3.

13.5 The Bid Security may be forfeited:

- a) if a bidder withdraws his bid during the period of bid validity; or
- b) if a bidder does not accept the correction of his Bid Price, pursuant to Sub-Clause 16.4 hereof; or
- c) in the case of a successful bidder, if he fails to:
  - (i) furnish the required Performance Security in accordance with Clause IB.21, or
  - (ii) Sign the Contract Agreement, in accordance with Sub-Clauses IB.20.2 & 20.3.

**IB.14 Validity of Bids, Format, Signing and Submission of Bid**

14.1 Bids shall remain valid for the period stipulated in the Bidding Data after the date of bid opening.

14.2 All Schedules to Bid are to be properly completed and signed.

14.3 No alteration is to be made in the Form of Bid except in filling up the blanks as directed. If any alteration be made or if these instructions be not fully complied with, the bid may be rejected.

14.4 Each bidder shall prepare Original and number of copies specified in the Bidding Data of the documents comprising the bid as described in Clause IB.8 and clearly mark them

**Execution of Student Service Centre  
Tender Documents**

“ORIGINAL” and “COPY” as appropriate. In the event of discrepancy between them, the original shall prevail.

- 14.5 The original and all copies of the bid shall be typed or written in indelible ink and shall be signed by a person or persons duly authorized to sign (in the case of copies, Photostats are also acceptable). This shall be indicated by submitting a written Power of Attorney authorizing the signatory of the bidder to act for and on behalf of the bidder. All pages of the bid shall be initialed and official seal be affixed by the person or persons signing the bid.
- 14.6 The Bid shall be delivered in person or sent by registered mail at the address to Employer as given in Bidding Data.

## **D. SUBMISSION OF BID**

### **IB.15 Deadline for Submission, Modification & Withdrawal of Bids**

- 15.1 Bids must be received by the Employer at the address/provided in Bidding Data not later than the time and date stipulated therein.
- 15.2 Bids submitted through telegraph, telex, fax or e-mail shall not be considered.
- 15.3 Any bid received by the Employer after the deadline for submission prescribed in Bidding Data will be returned unopened to such bidder.
- 15.4 Any bidder may modify or withdraw his bid after bid submission provided that the modification or written notice of withdrawal is received by the Employer prior to the deadline for submission of bids.
- 15.5 Withdrawal of a bid during the interval between the deadline for submission of bids and the expiration of the period of bid validity specified in the Form of Bid may result in forfeiture of the Bid Security pursuant to Sub-Clause IB.13.5 (a).

## **E. BID OPENING AND EVALUATION**

### **IB.16 Bid Opening, Clarification and Evaluation**

- 16.1 The Employer will open the bids, in the presence of bidders' representatives who choose to attend, at the time, date and location stipulated in the Bidding Data.
- 16.2 The bidder's name, Bid Prices, any discount, the presence or absence of Bid Security, and such other details as the Employer at its discretion may consider appropriate, will be announced by the Employer at the bid opening. The Employer will record the minutes of the

**Execution of Student Service Centre  
Tender Documents**

bid opening. Representatives of the bidders who choose to attend shall sign the attendance sheet.

Any Bid Price or discount which is not read out and recorded at bid opening will not be taken into account in the evaluation of bid.

16.3 To assist in the examination, evaluation and comparison of Bids the Consultant with consent of Committee may, at its discretion, ask the bidder for a clarification of its Bid. The request for clarification and the response shall be in writing and no change in the price or substance of the Bid shall be sought, offered or permitted.

16.4 (a) Prior to the detailed evaluation, pursuant to Sub-Clauses IB.16.7 to 16.9, the Consultant with consent of Committee will determine the substantial responsiveness of each bid to the Bidding Documents. For purpose of these Clauses, a substantially responsive bid is one which conforms to all the terms and conditions of the Bidding Documents without material deviations. It will include determining the requirements listed in Bidding Data.

(b) Arithmetical errors will be rectified on the following basis:

If there is a discrepancy between the unit price and total price that is obtained by multiplying the unit price and quantity, the unit price shall prevail and the total price shall be corrected. If there is a discrepancy between the words and figures the amount in words shall prevail. If there is a discrepancy between the Total Bid price entered in Form of Bid and the total shown in Schedule of Prices-Summary, the amount stated in the Form of Bid will be corrected by the Employer in accordance with the Corrected Schedule of Prices.

If the bidder does not accept the corrected amount of Bid, his Bid will be rejected and his Bid Security forfeited.

16.5 A Bid determined as substantially non-responsive will be rejected and will not subsequently be made responsive by the bidder by correction of the non-conformity.

16.6 Any minor informality or non-conformity or irregularity in a Bid which does not constitute a material deviation may be waived by Employer, provided such waiver does not prejudice or affect the relative ranking of any other bidders.

16.7 The Consultant with consent of Committee will evaluate and compare only the bids previously determined to be substantially responsive pursuant to Sub-Clauses IB.16.4 to 16.6 as per requirements given hereunder. Bids will be evaluated for complete scope of works. The prices will be compared on the basis of the Evaluated Bid Price pursuant to Sub-Clause 16.8 herein below.

(a) Technical Evaluation

## Execution of Student Service Centre

### Tender Documents

It will be examined in detail whether the Works offered by the bidder complies with the Technical Provisions of the Bidding Documents. For this purpose, the bidder's data submitted with the bid in Schedule B to Bid will be compared with technical features/criteria of the Works detailed in the Technical Provisions. Other technical information submitted with the bid regarding the Scope of Work will also be reviewed.

#### (b) Commercial Evaluation

It will be examined in detail whether the bids comply with the commercial/contractual conditions of the Bidding Documents. It is expected that no material deviation/stipulation shall be taken by the bidders.

#### 16.8 Evaluated Bid Price

In evaluating the bids, the Consultant with consent of Committee will determine for each bid in addition to the Bid Price, the following factors (adjustments) in the manner and to the extent indicated below to determine the Evaluated Bid Price:

- (i) Making any correction for arithmetic errors pursuant to Sub-Clause 16.4 hereof.
- (ii) Making an appropriate price adjustment for any other acceptable variation or deviation.
- (iii) Making an appropriate price adjustment for Deviations in terms of Payments (if any and acceptable to the Employer).
- (iv) Discount, if any, offered by the bidders as also read out and recorded at the time of bid opening.

#### 16.9 Evaluation Methods

Pursuant to Sub-Clause 16.8, Para (ii), and (iii) following evaluation methods for price adjustments will be followed:

##### (i) Price Adjustment for Technical Compliance

The cost of making good any deficiency resulting from technical noncompliance will be added to the Corrected Total Bid Price for comparison purposes only. The adjustments will be applied taking the highest price quoted by other bidders being evaluated in detail in their original Bids for corresponding item. In case of non-availability of price from other bidders, the price will be estimated by the Consultant with consent of Committee.

##### (ii) Price Adjustment for Commercial Compliance

The cost of making good any deficiency resulting from any quantifiable variations and deviations from the Bid Schedules and Conditions of Contract, as determined by the Consultant with consent of Committee will be added to the Corrected Total Bid Price for comparison purpose only. Adjustment for commercial compliance will be added to the Corrected Total Bid Prices.

**Execution of Student Service Centre  
Tender Documents**

(iii) Price Adjustment for Deviation in Terms of Payments

Refer to Bidding Data

**IB.17 Process to be Confidential**

17.1 Subject to Sub-Clause IB.16.3 heretofore, no bidder shall contact Consultant with consent of Committee on any matter relating to its Bid from the time of the Bid opening to the time the bid evaluation result is announced by the Employer. The evaluation result shall be announced at least ten (10) days prior to award of Contract. The announcement to all bidders will include table(s) comprising read out prices, discounted prices, price adjustments made, final evaluated prices and recommendations against all the bids evaluated.

17.2 Any effort by a bidder to influence Consultant with consent of Committee the Bid evaluation, Bid comparison or Contract Award decisions may result in the rejection of his Bid.

**F. AWARD OF CONTRACT**

**IB.18. Post Qualification**

18.1 The Employer, at any stage of the bid evaluation, having credible reasons for or *prima facie* evidence of any defect in supplier's or contractor's capacities, may require the suppliers or contractors to provide information concerning their professional, technical, financial, legal or managerial competence whether already pre-qualified or not:

Provided that such qualification shall only be laid down after recording reasons therefor in writing. They shall form part of the records of that bid evaluation report.

18.2 The determination will take into account the bidder's financial and technical capabilities. It will be based upon an examination of the documentary evidence of the bidders' qualifications submitted under Clause IB.11, as well as such other information required in the Bidding Documents.

**IB.19 Award Criteria & Employer's Right**

19.1 Subject to Sub-Clause IB.19.2, the Employer will award the Contract to the bidder whose bid has been determined to be substantially responsive to the Bidding Documents and who has offered the lowest evaluated Bid Price, provided that such bidder has been determined to be qualified to satisfactory perform the Contract in accordance with the provisions of Clause IB.18.

## **Execution of Student Service Centre**

### **Tender Documents**

19.2 Notwithstanding Sub-Clause IB.19.1, the Employer reserves the right to accept or reject any bid, and to annul the bidding process and reject all bids, at any time prior to award of Contract, without thereby incurring any liability to the affected bidders or any obligation to inform the affected bidders of the grounds for the Employer's action except that the grounds for its rejection of all bids shall upon request be communicated, to any bidder who submitted a bid, without justification of the grounds. Notice of the rejection of all the bids shall be given promptly to all the bidders.

#### **IB.20 Notification of Award & Signing of Contract Agreement**

20.1 Prior to expiration of the period of bid validity prescribed by the Employer, the Employer will notify the successful bidder in writing ("Letter of Acceptance") that his bid has been accepted.

20.2 Within seven (7) days from the date of furnishing of acceptable Performance Security under the Conditions of Contract, the Employer will send the successful bidder the Form of Contract Agreement provided in the Bidding Documents, incorporating all agreements between the parties.

20.3 The formal Agreement between the Employer and the successful bidder shall be executed within seven (7) days of the receipt of Form of Contract Agreement by the successful bidder from the Employer.

#### **IB.21 Performance Security**

21.1 The successful bidder shall furnish to the Employer a Performance Security in the form and the amount stipulated in the Conditions of Contract within a period of fourteen (14) days after the receipt of Letter of Acceptance.

21.2 Failure of the successful bidder to comply with the requirements of Sub-Clauses IB.20.2 & 20.3 or 21.1 or Clause IB.22 shall constitute sufficient grounds for the annulment of the award and forfeiture of the Bid Security.

#### **IB.22 Integrity Pact**

The Bidder shall sign and stamp the Form of Integrity Pact provided at Schedule-F to Bid in the Bidding Document for all Federal Government procurement contracts exceeding Rupees ten (10) million. Failure to provide such Integrity Pact shall make the bid non-responsive.

**BIDDING DATA****Instructions to Bidders**

| Sr. No |   |
|--------|---|
| 1      | Name of the Client:<br><b>Islamia University Bahawalpur</b><br><br>Method of selection: <b><u>LEAST COST BASIS</u></b>  |
| 2      | Financial Proposal to be submitted together with Technical Proposal (sealed <i>in separate envelopes</i> ):<br>Yes <input checked="" type="checkbox"/> No <input type="checkbox"/><br><br>Name of the assignment is: <b><u>EXECUTION OF THE APPROVED DESIGNED &amp; BOQS FOR THE STUDENT SERVICE CENTRE OF ISLAMIA UNIVERSITY BHAWALPUR</u></b> |
| 3      | A pre- bid/proposal conference will be held: Yes <input type="checkbox"/> No <input checked="" type="checkbox"/>  |
| 4      | The Client will provide the following inputs and facilities: N/A  |
| 5      | The Client envisages the need for continuity for downstream work:<br>Yes <input type="checkbox"/> No <input checked="" type="checkbox"/>  |
| 6      | Proposals must remain valid <b>60 days</b> after the submission deadline date.  |
| 7      | Proposals shall be submitted in the following language:<br><b>English</b>   |
| 8      | Shortlisted Bidders may associate with other shortlisted Bidders: Yes <input type="checkbox"/> No <input checked="" type="checkbox"/><br><b>(Not Applicable)</b>  |
| 9      | Training is a specific component of this assignment: Yes <input type="checkbox"/> No <input checked="" type="checkbox"/>  |

**Execution of Student Service Centre**

**Tender Documents**

|           |   |
|-----------|---|
| <b>10</b> | Amounts payable by the Client to the Bidder under the Agreement to be subject to local taxation: <b>Yes</b> <input checked="" type="checkbox"/> <b>No</b> <input type="checkbox"/><br><b>Taxes are deducted at source from payment to the Bidders unless they have Tax Exemption Certificate.</b>   |
| <b>11</b> | The date of exchange rate is: <b>Not applicable</b>   |
| <b>12</b> | Bidder must submit the <b>original</b> and <b>01 Duplicate Set</b> of the <b>Technical Proposal</b> , and the <b>Financial Proposal</b> .   |
| <b>13</b> | <b>Venue, Time, and Date of Bid Opening</b><br>The Proposal submission address is :<br><b>Principal Officer Estate Care</b><br><b>The Islamia University of Bahawalpur, Pakistan</b><br><br>Proposals must be submitted not later than the Tender Opening Date.<br>10:30 AM on _____, 2021.   |
| <b>14</b> | The Technical Proposal of the Bidders must be in conformance with the technical specifications and it must be properly filled in and all non-compliance items must be marked in red ink.<br><br>The Technical proposal which is in overall conformance as given above will be eligible for opening of Financial Bid.  |
| <b>15</b> | The criteria for determining the financial evaluation is the following:<br><br><b>Lowest Financial Bid</b>  |
| <b>16</b> | Bid shall be quoted entirely in Pak. Rupees. The payment shall be made in Pak. Rupees.  |
| <b>17</b> | The bidder/manufacturer has the financial, technical and production capability necessary to perform the Contract as follows:<br><br>(i) Copy of Registration with Income Tax / Sales Tax Department<br>(ii) List of similar works completed by the firm during last ten (5) years and similar works in hand, indicating total cost of such works<br>(iii) A certificate / affidavit that the firm is not blacklisted by any Govt./Autonomous Body.<br>(iv) Statements of accounts for the last three (3) years. |



Execution of Student Service Centre

Tender Documents

|           |  |
|-----------|--|
| <b>18</b> | <b>Amount of Bid Security</b><br>Bid security is 5% of bid price in shape of CDR issued from any schedule bank   |
| <b>19</b> | A detailed description of the Works, essential technical and performance characteristics are attached as schedule to bid in Specific Work Data.  |
| <b>20</b> | <b>Responsiveness of Bids</b><br>(i) the Bid is valid till required period,<br>(ii) the Bid prices are firm during currency of contract (if it is a fixed price bid)<br>(iii) completion period offered is within specified limits,<br>(iv) the Bidder/Manufacturer is eligible to Bid and possesses the requisite experience, capability and qualification.<br>(v) the Bid does not deviate from basic technical requirements and<br>(vi) the Bids are generally in order, etc. |
| <b>21</b> | <b>Price Adjustment:</b><br>Price Adjustment for Deviations in Terms of Payment<br>If a bid deviates from the terms of payment/payment conditions as specified in the <b>Form of Bid and Schedules to Bid</b>  |

Execution of Student Service Centre

Tender Documents

**FORM OF BID**

(LETTER OF OFFER)

Bid Reference No. \_\_\_\_\_

\_\_\_\_\_  
\_\_\_\_\_

(Name of Works)

To:

\_\_\_\_\_  
\_\_\_\_\_  
\_\_\_\_\_

Gentlemen,

1. Having examined the Bidding Documents including Instructions to Bidders, Bidding Data, Conditions of Contract, Contract Data, Specifications, Drawings, if any, Schedule of Prices and Addenda Nos. \_\_\_\_\_ for the execution of the above-named Works, we, the undersigned, being a company doing business under the name of and address

\_\_\_\_\_ and being duly incorporated under the laws of Pakistan hereby offer to execute and complete such Works and remedy any defects therein in conformity with the said Documents including Addenda thereto for the Total Bid Price of Rs \_\_\_\_\_ (Rupees \_\_\_\_\_) or such other sum as may be ascertained in accordance with the said Documents.

2. We understand that all the Schedules attached hereto form part of this Bid.

3. As security for due performance of the undertakings and obligations of this Bid, we submit herewith a Bid Security in the amount of \_\_\_\_\_ drawn in your favor or made payable to you and valid for a period of twenty eight (28) days beyond the period of validity of Bid.

4. We undertake, if our Bid is accepted, to commence the Works and to deliver and complete the Works comprised in the Contract within the time(s) stated in Contract Data.

5. We agree to abide by this Bid for the period of \_\_\_\_\_ days from the date fixed for receiving the same and it shall remain binding upon us and may be accepted at any time before the expiration of that period.

**Execution of Student Service Centre**

**Tender Documents**

6. Unless and until a formal Agreement is prepared and executed, this Bid, together with your written acceptance thereof, shall constitute a binding contract between us.

7. We undertake, if our Bid is accepted, to execute the Performance Security referred to in Conditions of Contract for the due performance of the Contract.

8. We understand that you are not bound to accept the lowest or any bid you may receive.

9. We do hereby declare that the Bid is made without any collusion, comparison of figures or arrangement with any other person or persons making a bid for the Works.

Dated this \_\_\_\_\_ day of \_\_\_\_\_, 20

Signature \_\_\_\_\_

in the capacity of \_\_\_\_\_ duly authorized to sign bid for and on behalf of

\_\_\_\_\_  
(Name of Bidder in Block Capitals)

(Seal)

Address \_\_\_\_\_

\_\_\_\_\_

Witness:

(Signature) \_\_\_\_\_

Name: \_\_\_\_\_

Address: \_\_\_\_\_

\_\_\_\_\_

**Execution of Student Service Centre**

**Tender Documents**

**SCHEDULES TO BID INCLUDE THE FOLLOWING:**

- ✓ Schedule A to Bid: Schedule of Prices
- ✓ Schedule B to Bid: Specific Works Data
- ✓ Schedule C to Bid: Works to be Performed by Subcontractors
- ✓ Schedule D to Bid: Proposed Program of Works
- ✓ Schedule E to Bid: Method of Performing Works
- ✓ Schedule F to Bid: Integrity Pact]

## **SCHEDULE - A TO BID**

### **PREAMBLE TO SCHEDULE OF PRICES**

#### **1. General**

- 1.1 The Schedule of Prices shall be read in conjunction with the Conditions of Contract, Contract Data together with the Specifications and Drawings, if any.
- 1.2 The Contract shall be for the whole of the Works as described in these Bidding Documents. Bids must be for the complete scope of works.

#### **2. Description**

- 2.1 The general directions and descriptions of works and materials are not necessarily repeated nor summarized in the Schedule of Prices. References to the relevant sections of the Bidding Documents shall be made before entering prices against each item in the Schedule of Prices.

#### **3. Units & Abbreviations**

- 3.1 Units of measurement, symbols and abbreviations expressed in the Bidding Documents shall comply with the System International Unites (SI Units).

#### **4. Rates and Prices**

- 4.1 Except as otherwise expressly provided under the Conditions of Contract, the rates and amounts entered in the Schedule of Prices shall be the rates at which the Contractor shall be paid and shall be the full inclusive value of the works set forth or implied in the Contract; except for the amounts reimbursable, if any to the Contractor under the Contract.
- 4.2 Unless otherwise stipulated in the Contract Data, the rates and prices entered by the bidder shall not be subject to adjustment during the performance of the Contract.
- 4.3 All duties, taxes and other levies payable by the Contractor shall be included in the rates and prices.
- 4.4 The whole cost of complying with the provisions of the Contract shall be included in the items provided in the Schedule of Prices, and where no items are provided, the cost shall be deemed to be distributed among the rates and prices entered for the related items of the Works and no separate payment will be made for those items.

**Execution of Student Service Centre  
Tender Documents**

The rates, prices and amounts shall be entered against each item in the Schedule of Prices. Any item against which no rate or price is entered by the bidder will not be paid for by the Employer when executed and shall be deemed covered by the rates and prices for other items in the Schedule of Prices.

4.5 (a) the bidder shall be deemed to have obtained all information as to and all requirements related thereto which may affect the bid price.

\*(b) The Contractor shall be responsible to make complete arrangements for the transportation of the Plant to the Site.

\*(Employer may modify as appropriate)

4.6 The Contractor shall provide for all parts of the Works to be completed in every respect. Notwithstanding that any details, accessories, etc. required for the complete installation and satisfactory operation of the Works, are not specifically mentioned in the Specifications, such details shall be considered as included in the Contract Price.

## **5. Bid Prices**

### **5.1 Break-up of Bid Prices**

The various elements of Bid Prices shall be quoted as detailed by the Employer in the format of Schedule of Prices.

The bidder shall recognize such elements of the costs which he expects to incur the performance of the Works and shall include all such costs in the rates and amounts entered in the Schedule of Prices.

### **5.2 Total Bid Price**

The total of bid prices in the Schedule of Prices shall be entered in the Summary of Bid Prices.

## **6. Provisional Sums**

6.1 Provisional Sums included and so designated in the Schedule of Prices if any, shall be expended in whole or in part at the direction and discretion of the Consultant with consent of Committee. The Contractor will only receive payment in respect of Provisional Sums if he has been instructed by the Consultant with consent of Committeeutilize such sums.

**Execution of Student Service Centre**

**Tender Documents**

**SCHEDULE - A TO BID**

**SCHEDULE OF PRICES – SUMMARY OF BID PRICES**

**ISLAMIA UNIVERSITY BHAWALPUR, BAHAWALPUR**

**BILL OF QUANTITIES FOR ADDITION/ ALTERATION & INTERIOR  
RENOVATION OF THE STATE OF THE ART E-SAHULAT STUDENT SERVICE  
CENTER AT ABBASIA CAMPUS, IUB**

**The Islamia University of Bahawalpur**

**CONSTRUCTION OF STUDENT COUNSELING AREA AT ISLAMIA UNIVERSITY OF BAHAWALPUR**

**BILL OF QUANTITIES**

**SUMMARY OF COST**

**A. MRS ITEMS**

**BUILDING WORKS**

|                                    |            |
|------------------------------------|------------|
| Civil Works                        | Rs.        |
| Plumbing & Gas Supply Works        | Rs.        |
| Electrical Works                   | Rs.        |
| <b>Total Cost of MRS Items (A)</b> | <b>Rs.</b> |

**B. NON MRS ITEMS**

**BUILDING WORKS**

|  |            |
|--|------------|
| Civil Works                            | Rs.        |
| Plumbing & Gas Supply Works            | Rs.        |
| HVAC Work                              | Rs.        |
| Electrical Works                       | Rs.        |
| <b>Total Cost of Non MRS Items (B)</b> | <b>Rs.</b> |

|  |  |            |
|--|--|------------|
|  | <b>Total - (A + B)</b>   | <b>Rs.</b> |
|  | Add Contingency @ 5+3%   |            |
|  | Add 5% Market variation and Unforeseen                                       |            |
|  | <b>Sub-Total Amount for Student Consuling Center</b>                         | <b>Rs.</b> |
|  | _____ Add sale Tax of PRA@16%  |            |
|  | <b>Total Amount For Student Consuling Centre C/O General Project summary</b> | <b>Rs.</b> |



Execution of Student Service Centre

Tender Documents

The Islamia University of Bahawalpur

CONSTRUCTION OF STUDENT COUNSELING AREA AT ISLAMIA UNIVERSITY OF BAHAWALPUR

BILL OF QUANTITIES

CIVIL WORKS

MRS ITEMS

| SR-#                            | (MRS) 1st BI-ANNUAL<br>2021 DIST<br>BAHAWALPUR |           |        | DESCRIPTION   | QUANTITY | UNIT    | RATE<br>1st Bi-<br>Annual<br>2021 | AMOUNT<br>(Rs) | REMARKS |
|---------------------------------|--|-----------|--------|---|----------|---------|-----------------------------------|----------------|---------|
| (1)                             | (2)  | (3)       | (4)    | (5)   | (6)      | (7)     | (8)                               | (9)            | (10)    |
|                                 |  | Item/Page |        | <b>General</b>  |          |         |                                   |                |         |
|                                 |  |           |        | All items of civil works described under title "Description" unless specifically indicated otherwise, shall be deemed to be read in terms of supply, storing, protecting, making, assembling, installing, applying, laying, fixing, testing, commissioning, etc |          |         |                                   |                |         |
| <b>DISMENTLING (DEMOLITION)</b> |  |           |        |   |          |         |                                   |                |         |
| 1                               | P-34   | C-4       | I-13   | Dismantling brick work in lime or cement mortar.  | 1,103.00 | 100 Cft |                                   |                |         |
| 2                               | P-36   | C-4       | I-29   | Dismantling brick or flagged flooring without concrete foundation.  | 5,375.00 | 100 Sft |                                   |                |         |
| 3                               | P-35   | C-4       | I-19-c | Dismantling cement concrete 1:2:4 plain.  | 671.88   | 100 Cft |                                   |                |         |
| 4                               | P-35   | C-4       | I-20   | Dismantling cement concrete reinforced, separating reinforcement from concrete, cleaning and straightening the same.  | 80.00    | 100 Cft |                                   |                |         |
| 5                               | P-37   | C-4       | I-35-a | Dismantling wooden partition Jaffry work etc.   | 760.00   | 100 Sft |                                   |                |         |
| 6                               | P-36   | C-4       | I-32-a | Removing door with chowkat.   | 20.00    | Each    |                                   |                |         |
| 7                               | P-36   | C-4       | I-32-b | Removing windows and sky lights with chowkat.   | 13.00    | Each    |                                   |                |         |
| <b>CONCRETE</b>                 |  |           |        |   |          |         |                                   |                |         |

**Execution of Student Service Centre**

**Tender Documents**

|                               |       |      |        |  |          |         |            |  |  |
|-------------------------------|-------|------|--------|--|----------|---------|------------|--|--|
| 8                             | P-42  | C-6  | I-5-h  | Cement concrete plain including placing compacting, finishing and curing complete (including screening and washing of stone aggregate):<br>(h) Ratio 1: 3: 6 | 19.17    | 100 Cft |            |  |  |
| <b>FLOORING</b>               |       |      |        |  |          |         |            |  |  |
| 9                             | P-66  | C-10 | I-3    | Providing, laying, watering and ramming brick ballast 1½" to 2"(40 mm to 50 mm) gauge mixed with 25% sand, for floor foundation, complete in all respects.   | 350.00   | 100 Cft |            |  |  |
| <b>BRICKWORK</b>              |       |      |        |  |          |         |            |  |  |
|                               |       |      |        | Pacca brick work in ground floor:- i) cement, sand mortar:-  |          |         |            |  |  |
| 10                            | P-52  | C-7  | I-5-i  | Ratio 1:3  | 20.00    | 100 Cft |            |  |  |
| 11                            | P-52  | C-7  | I-5-i  | Ratio 1:5  | 340.00   | 100 Cft |            |  |  |
|                               |       |      |        |  |          |         |            |  |  |
| 12                            | P-56  | C-7  | I-30   | Supplying and filling sand under floor; or plugging in wells.  | 1,630.00 | 100 Cft |            |  |  |
| <b>SURFACE RENDERING</b>      |       |      |        |  |          |         |            |  |  |
| 13                            | P-72  | C-11 | I-10-b | Cement plaster 3/8" (10 mm) thick under soffit of R.C.C. roof slabs only, upto 20' height. b) 1:3  | 4,000.00 | 100 Sft |            |  |  |
|                               |       |      |        |  |          |         |            |  |  |
| 14                            | P-72  | C-11 | I-11-b | Cement plaster 1:5 upto 20' (6.00 mm) height:- b) ½" (13 mm) thick   | 4,000.00 | 100 Sft |            |  |  |
|                               |       |      |        |  |          |         |            |  |  |
| 15                            | P-73  | C-11 | I-22   | Priming coat of chalk under distemper.   | 2,600.00 | 100 Sft |            |  |  |
|                               |       |      |        |  |          |         |            |  |  |
| 16                            | P-73  | C-11 | I-23-a | Distempering:- three coats   | 2,600.00 | 100 Sft |            |  |  |
| <b>PAINT &amp; VARNISHING</b> |       |      |        |  |          |         |            |  |  |
|                               |       |      |        | Preparing surface and painting with emulsion paint:-   |          |         |            |  |  |
| 17                            | P-89  | C-13 | I-31-a | a) first coat  | 4,000.00 | 100 Sft |            |  |  |
| 18                            | P-89  | C-13 | I-31-b | b) 2nd and each subsequent coat  | 4,000.00 | 100 Sft |            |  |  |
| <b>MISCELLANEOUS</b>          |       |      |        |  |          |         |            |  |  |
| 19                            | P-164 | C-26 | I-42   | Spraying anti-termite liquid mixed with water in the ratio of 1:40.  | 550.00   | 100 Sft |            |  |  |
|                               |       |      |        | <b>Total Cost Of Civil Works (MRS Items)</b>   |          |         | <b>Rs.</b> |  |  |

Execution of Student Service Centre

Tender Documents

**The Islamia University of Bahawalpur**  
**CONSTRUCTION OF STUDENT COUNSELING AREA AT ISLAMIA UNIVERSITY OF**  
**BAHAWALPUR**  
**BILL OF QUANTITIES**  
**PUBLIC HEALTH & GAS SUPPLY WORKS**  
**MRS ITEMS**

| SR-# | (MRS) 1st BI-ANNUAL<br>2021 DIST<br>BAHAWALPUR |           |        | DESCRIPTION   | QUANTIT<br>Y | UNIT | RATE<br>1st Bi-<br>Annual<br>2021 | AMOUNT<br>(Rs) | REMAR<br>KS |
|------|--|-----------|--------|---|--------------|------|-----------------------------------|----------------|-------------|
| (1)  | (2)  | (3)       | (4)    | (5)   | (6)          | (7)  | (8)                               | (9)            | (10)        |
|      |  | Item/Page |        | <b>Fixtures</b>   |              |      |                                   |                |             |
| 1    | P-115  | C-19      | I-35   | Providing and fitting 10 cm (4") gully trap, including cement concrete, cost of PVC grating 15x15 cm (6"x6") and masonry chamber 30x30 cm (12"x12").  | 2.00         | Each |                                   |                |             |
|      |  |           |        | Providing and fixing, floor trap of cast iron, including concrete chamber all round, and C.I. grating:-   |              |      |                                   |                |             |
| 2    | P-115  | C-19      | I-33i  | 3" dia  | 8.00         | Each |                                   |                |             |
| 3    | P-115  | C-19      | I-33ii | 4" dia  | 8.00         | Each |                                   |                |             |
|      |  |           |        | Providing and fitting "P" trap:-  |              |      |                                   |                |             |
| 4    | P-115  | C-19      | I-34i  | 4" dia for Kitchens and Wash Basin Area   | 3.00         | Each |                                   |                |             |
| 5    | P-115  | C-19      | I-34ii | 3" dia for WCs Area   | 7.00         | Each |                                   |                |             |
|      |  |           |        | Providing and fixing, 6" (150 mm) thick R.C.C. manhole cover with 3"x3"x1/4" (75x75x6mm) angle iron frame, 22" (550 mm) i/d as per standard drawing STD/PD No. 7 of 1977, complete in all respects. | 3.00         | Each |                                   |                |             |
|      |  |           |        | Providing and fitting glazed earthen ware water closet European type, excluding seat and cover:-  |              |      |                                   |                |             |
| 7    | P-112  | C-19      | I-1-ii | ii) coloured  | 7.00         | Each |                                   |                |             |

**Execution of Student Service Centre**

**Tender Documents**

|  |       |      |        |  |      |            |  |  |  |
|--|-------|------|--------|--|------|------------|--|--|--|
|  |       |      |        | Providing and fitting glazed earthen ware wash hand basin 56x40 cm (22"x16") including bracket set, waste pipe and waste coupling, etc.    |      |            |  |  |  |
| 8  | P-112 | C-19 | I-6-ii | coloured, with pedestal  | 5.00 | Each       |  |  |  |
|  |       |      |        | Providing and fixing, chromium plated mixing valve, for wash hand basin, sink or shower.   |      |            |  |  |  |
| 9  | P-115 | C-19 | I-29   | Sink Mixer   | 1.00 | Each       |  |  |  |
| 10   | P-115 | C-19 | I-29   | Basin Mixer  | 5.00 | Each       |  |  |  |
|  |       |      |        |  |      |            |  |  |  |
| 11   | P-115 | C-19 | I-27   | Providing and fixing chromium plated tee stop cock 15mm (½").  | 7.00 | Each       |  |  |  |
|  |       |      |        |  |      |            |  |  |  |
| 12   | P-113 | C-19 | I-17   | Providing and fixing, chromium plated toilet paper holder.   | 7.00 | Each       |  |  |  |
|  |       |      |        |  |      |            |  |  |  |
| 13   | P-113 | C-19 | I-15   | Providing and fixing, chromium plated soap dish  | 4.00 | Each       |  |  |  |
|  |       |      |        | Providing and fixing, chromium plated towel rail:-   |      |            |  |  |  |
| 14   | P-114 | C-19 | I-18-i | i) 60 cm (24") long, and 2 cm (¾") dia.  | 4.00 | Each       |  |  |  |
|  |       |      |        |  |      |            |  |  |  |
| 15   | P-114 | C-19 | I-19   | Providing and fixing looking glass 55x40 cm (22"x16") size, and 5 mm thick, first quality.   | 5.00 | Sft        |  |  |  |
|  |       |      |        |  |      |            |  |  |  |
| 16   | P-112 | C-19 | I-07   | Providing and fixing stainless steel sink with drain board, size 120x60 cm (48"x24") including bracket set, waste pipe and waste coupling. | 1.00 | Each       |  |  |  |
| <b>Total Cost of Plumbing &amp; Gas Supply Works (MRS Items)</b> |       |      |        |  |      | <b>Rs.</b> |  |  |  |

Execution of Student Service Centre

Tender Documents

The Islamia University of Bahawalpur

CONSTRUCTION OF STUDENT COUNSELING AREA AT ISLAMIA UNIVERSITY OF BAHAWALPUR

BILL OF QUANTITIES

ELECTRICAL WORKS

MRS ITEMS

| SR- # | (MRS) 1st BI-ANNUAL<br>2021 DIST BAHAWALPUR |               |        | DESCRIPTION   | QUAN<br>TITY | UNIT | RATE<br>1st Bi-<br>Annual<br>2021 | AMO<br>UNT<br>(Rs) | REMA<br>RKS |
|-------|---|---------------|--------|---|--------------|------|-----------------------------------|--------------------|-------------|
| (1)   | (2)   | (3)           | (4)    | (5)   | (6)          | (7)  | (8)                               | (9)                | (10)        |
|       |   | Item/Pa<br>ge |        | <b>General</b>  |              |      |                                   |                    |             |
|       |   |               |        | All items of electrical works described under title "Description" unless specifically indicated otherwise, shall be deemed to be read in terms of supply, storing, protecting, making, assembling, installing, applying, laying, fixing, testing, commissioning, clearing etc. of the same inclusive of but not limited to all materials, labour, tools, plants equipment's, appliances etc. as required for the completion and maintenance 'of the electrical work as per drawings, specifications, and/or as directed by the Engineer Incharge. |              |      |                                   |                    |             |
|       |   |               |        | Supply and erection of PVC pipe for wiring recessed in walls, including inspection boxes, pull boxes, hooks, cutting jharries, and repairing surface, etc., complete with all specials.   |              |      |                                   |                    |             |
| 1     | P-143                                       | C-24          | I-3ii  | 20-mm i/d   | 200.00       | Rft  |                                   |                    |             |
| 2     | P-143                                       | C-24          | I-3iii | 25-mm i/d   | 1,250.00     | Rft  |                                   |                    |             |
|       |   |               |        | Supply and erection of PVC pipe for wiring on surface including clamps inspection boxes, pull boxes, bends, tees, repairing surface, etc., complete with all specials:-   |              |      |                                   |                    |             |
| 3     | P-143                                       | C-24          | I-4ii  | 20-mm i/d   | 1,600.00     | Rft  |                                   |                    |             |
| 4     | P-143                                       | C-24          | I-4iii | 25-mm i/d   | 1,000.00     | Rft  |                                   |                    |             |
|       |   |               |        | Supply and erection PVC pipe for recessed wiring (main and sub-main) purpose, including bends, specials, etc. in floor, wall or trenches:-  |              |      |                                   |                    |             |
| 5     | P-143                                       | C-24          | I-6i   | 50-mm i/d   | 150.00       | Rft  |                                   |                    |             |

**Execution of Student Service Centre**

**Tender Documents**

|  |       |      |           |   |          |     |  |  |  |  |
|--|-------|------|-----------|---|----------|-----|--|--|--|--|
|  |       |      |           | Supply and erection of single core PVC insulated copper conductor cables, in prelaid PVC pipe/M.S. conduit/G.I pipe/wooden strip batten/wooden casing an capping/G.I. wire/trenches (rate for cables only):-<br>250/440 volts, PVC insulated: |          |     |  |  |  |  |
| 6  | P-144 | C-24 | I-10a-i   | 3/0.74 mm (3/0.029")  | 7,420.00 | Rft |  |  |  |  |
| 7  | P-144 | C-24 | I-10a-iii | 7/0.74 mm (7/0.029")  | 7,800.00 | Rft |  |  |  |  |
|  |       |      |           | Supply and erection of copper conductor cables for service connection, in prelaid pipe/G.I. wire/trenches, etc. (rate for cable only):-<br>PVC insulated, PVC sheathed 2-core 250/440-volt grade cable,                                       |          |     |  |  |  |  |
| 8  | P-146 | C-24 | I-13a-ii  | 7/1.63 mm (7/0.064")  | 40.00    | Rft |  |  |  |  |
|  |       |      |           | PVC insulated, PVC sheathed 4 core 660/1100 volt grade cable armoured with G.I. wire 16 SWG.  |          |     |  |  |  |  |
| 9  | P-146 | C-24 | I-13d-ii  | 7/1.63 mm (7/0.064")  | 60.00    | Rft |  |  |  |  |
| 10   | P-146 | C-24 | I-13d-ii  | 19/1.63 mm (19/0.064")  | 150.00   | Rft |  |  |  |  |
| <b>Total Cost of Electrical Works (MRS Items) Rs</b> |       |      |           |   |          |     |  |  |  |  |

Execution of Student Service Centre

Tender Documents

**The Islamia University of Bahawalpur**  
**CONSTRUCTION OF STUDENT COUNSELING AREA AT ISLAMIA UNIVERSITY OF**  
**BAHAWALPUR**  
**BILL OF QUANTITIES**  
**CIVIL WORKS**  
**NON MRS ITEMS**

| SR # | DESCRIPTION   | QUANTITY | UNIT | UNIT RATE Rs | AMOUNT Rs | Remarks |
|------|---|----------|------|--------------|-----------|---------|
| (1)  | (2)   | (3)      | (4)  | (5)          | (6)       | (7)     |
|      | <b>General</b>  |          |      |              |           |         |
|      | All items of civil works described under title "Description" unless specifically indicated otherwise, shall be deemed to be read in terms of supply, storing, protecting, making, assembling, installing, applying, laying, fixing, testing, commissioning, clearing etc. of the same inclusive but not limited to all materials, lab our, tools, plants equipments, appliances etc. as required for the completion and 'maintenance of the civil work as per drawings, specifications, and/or as directed and approved by the Engineer Incharge. |          |      |              |           |         |
| 1    | Removing Existing Kitchen Cabinets, i/c all useless material as in the proposed area of the building including stacking/ handing over of useable material to the Client, complete in all respects in order to commence the construction work, to the satisfaction of the Client & Consultants.  |          |      |              |           |         |
|      | i) Removing Existing Kitchen Cabinets   | 340.00   | Sft  |              |           |         |
| 2    | Supply, fabricate, test and install painted security steel grills with frame for windows openings including fittings and fixing accessories complete in all respects as shown on drawings and in accordance with the Specifications.<br>'i) Grill Panels made out of M.S. 3/8" x 3/8" square bars and 1" wide M.S. flat of approved design/shape and pattern.   | 375.00   | Sft  |              |           |         |
| 3    | Providing, designing, and fabrcating of M.S. Louvers bench consisting of back and wall cladding fabricating from 1½"x2" holoow section horizontal and vertical both ways finished with decorative metalic epoxy coating in approved color and shade including fittings and fixing accessories complete as shown on Drawing in accordance with the Specifications and approval of the Engineer.  |          |      |              |           |         |
|      | i) 6'-3"x2'-4" Wide Seated Sitting Bench as Shown on Drawing Detail # 01  | 1.00     | Each |              |           |         |
|      | ii) 'Verical M.S Wall Cladded Louvers as Shown on Drawing Detail "M"  | 76.00    | Sft  |              |           |         |
|      |   |          |      |              |           |         |

**Execution of Student Service Centre**

**Tender Documents**

|   |  |       |     |  |  |  |
|---|--|-------|-----|--|--|--|
| 4 | Provide and install Synthetic PVC Plastic Board 20-mm thick fabricated from SABZ PVC AU-67R resin or equal and approved Type-1 High Glass UV factory finished cabinets in approved color, texture, shade and grains plastic veneered board consisting of ¾" thick pre-polished Granite counter Tops with splash block and round edging have a drain board to receive integral bowl sink over already laid 1½" thick RCC slab cast in 1:1½:3 , type-2 insulated low density plastic board boxes, and matching color 20mm thick uv finished front shutters with PVC edging/lipping over solid wood frame , approved shape, pattern and design grooves fixed over solid deodar wood frames and wood work finished with PU transparent lacquer from Italy or equivalent, anti-termit partitions, shelves, drawers and hard wood Lipping including rough and finish hardware complete as shown on Drawings and in accordance with the Specifications. |       |     |  |  |  |
|   | i) Floor Mounted Base Cabinets: 600-mm Wide.   | 16.50 | Rft |  |  |  |
| 5 | Provide and install Synthetic PVC Plastic Board 20-mm thick fabricated from SABZ PVC AU-67R resin or equal and approved Type-1 High Glass UV factory finished cabinets consisting of Type-2, ¾" thick rigid high bulk density Plastic board back boxes and Type-1 front doors/shutters supported with approved solid deodar wood frame, partitions and shelves of matching color, laminated hardboard back of approved design, grooves/pattern and PVC Lipping , drawers and Finished with PU transparent lacquer from Italy or equivalent as per manufacturer's printed instructions including rough and finish hardware complete as shown on Drawings and in accordance with the Specifications.   |       |     |  |  |  |
|   | i) Wall Mounted Hanging Cabinets: 550-mm Wide  | 13.50 | Rft |  |  |  |
| 6 | Provide and install Synthetic PVC Plastic Board 20-mm thick fabricated from SABZ PVC AU-67R resin or equal and approved Type-1 High Glass UV factory finished kitchen exhaust hood made of washable and scratch proof PVC finish consisting of high pressure double pressed scratch proof and washable PVC laminated plastic board solid deodar wood frames supported with approved hardwood and with 22BG, PGI sheet lining fixed on inner side, with imported German PVC edging of matching color , including rough and finish hardware complete as shown on Drawings and in accordance with the Specifications.   |       |     |  |  |  |
|   | i) Exhaust Hood  | 3.00  | Rft |  |  |  |



**Execution of Student Service Centre**

**Tender Documents**

|   |   |       |     |  |  |
|---|---|-------|-----|--|--|
| 7 | Provide and install Synthetic PVC Plastic Board 20-mm thick fabricated from SABZ PVC AU-67R resin or equal and approved Type-1 High Glass UV factory finished Vanity closet and shelves in approved color, texture, shade and grains plastic veneered board consisting of ¾" thick pre-polished Granite counter Tops with splash block and round edging have a drain board to receive integral bowl wash basin over already laid 1½" thick RCC slab cast in 1:1½:3 , type-2 insulated low density plastic board boxes, and matching color 20mm thick uv finished front shutters with PVC edging / lipping over solid wood frame , approved shape, pattern and design grooves fixed over solid deodar wood frames and wood work finished with PU transparent lacquer from Italy or equivalent ,anti-termit partitions, shelves, drawers and hard wood Lipping including rough and finish hardware complete as shown on Drawings and in accordance with the Specifications. |       |     |  |  |
|   | i) Floor Mounted Base Cabinets: 600-mm Wide.  | 13.50 | Rft |  |  |
| 8 | Providing, designing, fabricating and installing of wooden service counter consisting of 2"x2" solid deodar wood basic frame,¾" thick white laminated MDF sheet, 2"x2" solid deodar wood louvers duly termicide treated, M.S. Powder coated top counter frame of 20-mm thick UV Resistance Corian slab, 20-mm thick high glass UV finished front working MDF Sheet counter in approved color, shade and pattern including 8-mm thick tempered glass panels in frosted patterned with PU transparent lacquer from Italy or equivalent as per manufacturer's printed instructions. Including all necessary rough and finish imported hardware's, complete in all respects, as shown on drawings , in accordance with specifications and approved by the Engineer  |       |     |  |  |
|   | i) Service Counter as Shown on Drawing Detail-"E"   | 43.25 | Rft |  |  |
| 9 | Providing, designing, fabricating standing podium area consisting of 3" thick PCC (1:2:4) base powder coated M.S Pipe frame supporting to wooden frame, solid deodar wood to both sides and top framing to supporting wood duly termicide treated individual mullions covered with 12-mm-thick tempered glass, 2"x2" vertical louvers, cavities opening for dustbins, finished with PU transparent lacquer from Italy or equivalent as per manufacturer's printed instructions. Including all necessary rough and finish imported hardware's, complete in all respects, as shown on drawings , in accordance with specifications and approved by the  |       |     |  |  |

**Execution of Student Service Centre**

**Tender Documents**

|    |  |        |     |  |  |  |
|----|--|--------|-----|--|--|--|
|    | Engineer   |        |     |  |  |  |
|    | i) Standing Podium as Shown on Drawing Detail-"G"  | 28.25  | Rft |  |  |  |
| 10 | Providing, designing, fabrication Student Self Counseling Area Desk Top counter consisting of 1½" RCC slab finished with Corian top and bull nose edging, in approved color and shade including 20-mm thick MDF structure of high glass UV laminated gladded with foam and fabrication with matching color PVC edging, hung directly on wall including fittings and fixtures complete as shown on drawings, as specified and approval the Engineer.  |        |     |  |  |  |
|    | i) Computer Desk Top as Shown on Drawing Detail-"J" & "L"  | 32.25  | Rft |  |  |  |
| 11 | Providing, designing, fabricating Student Self Counseling Area feature wall consisting of deodar solid wood millions supporting frame duly termicide treated, 20mm thick MDF Sheet of high glass finished UV laminated cladding in ZIG-ZAG form finished with PU transparent lacquer from Italy or equivalent as per manufacturer's printed instructions. Including all necessary rough and finish imported hardware's, complete in all respects, as shown on drawings , in accordance with specifications and approved by the Engineer  |        |     |  |  |  |
|    | i) Feature Wall as Shown on Drawing Detail "A" & "B"   | 975.00 | Sft |  |  |  |
| 12 | Providing, designing, fabricating Student Counseling Cubicle sitting pods consisting of duly termicide treated Keekar wood Seasonal for the panels. 58-panels each pod. 3" pipe. 1½"-gap. 2"-frame support in keekar. Length: 8-ft Height : 5-ft Boarder Top: 2"-Table with MDF top and MS frame. For sitting: MDF box fitting with Deco paint. Foam seat Size: 18"-Back support: 1'-there will be a joint at the outer curve but grooved. entrance side opening, exposed wood surface finished with PU transparent lacquer from Italy or equivalent as per manufacturer's printed instructions. Including all necessary rough and finish imported hardware's, complete in all respects, as shown on drawings , in accordance with specifications and approved by the Engineer |        |     |  |  |  |

**Execution of Student Service Centre**

**Tender Documents**

|    |   |          |      |  |  |  |
|----|---|----------|------|--|--|--|
|    | i) Student Counseling Cubicle as Shown on Drawing Detail "C"  | 5.00     | Each |  |  |  |
| 13 | Providing, designing, fabricating Acrylic Sheet Symbol composition of University Logo over 1"x1" solid deodar wood supporting frame duly anti-termite treated. textured finished wall in approved color, shade including niches and grooves complete in all respect as shown on Drawing in accordance with the Specifications and approval of the Engineers.  |          |      |  |  |  |
|    | i) University Logo as Shown on Drawing Detail "I"   | 132.00   | Sft  |  |  |  |
| 14 | Providing, designing and fabrication the composite MDF and fabric with foam cladding around columns consisting of brass strip with brasso polish lining in between the groove, solid deodar wood framing with 2"x2" vertical and horizontal. 3/4" thick Laminated MDF sheet covering. fitting and fixing accessories exposed wood surface finished with PU transparent lacquer polish from Italy or equivalent as per manufacturer's printed instructions. complete as shown on drawings in accordance with the Specification and approval of the Engineer. |          |      |  |  |  |
|    | i) MDF Cladding on the Columns as Shown on Drawing Detail "F"   | 200.00   | Sft  |  |  |  |
|    | ii) 'Fabric W/Foam Cladding on the Columns as Shown on Drawing Detail "G"   | 117.00   | Sft  |  |  |  |
| 15 | Providing, designing and fabrication the partition wall consisting of 2½"x2½" size solid deodar wood vertical and horizontal internal supporting frame and covering both sides with 3/4" thick laminated MDF covers including fittings and fixing accessories, exposed wood surface finished with PU transport lacquer polish from Italy or equivalent as per Manufacturer's printed instructions complete as shown on Drawings in accordance with the Specifications and approval of the Engineer.   |          |      |  |  |  |
|    | i) 4" Thick Wooden Partition Walls  | 243.00   | Sft  |  |  |  |
| 16 | Supplying and applying Cementitious water proofing in wet areas under tiles, using two coats of applied @ 1.5 Kg/m <sup>2</sup> per coat, including preparation of surface, repairing and plugging leaks, cleaning, curing, all executed as per printed instructions of manufacture, including testing and manufacturer's warranty, complete in all respects, in accordance with specifications, as directed and approved by the Engineer.  |          |      |  |  |  |
|    | i) To Horizontal Surfaces to Floor Toilet & Kitchen   | 475.00   | Sft  |  |  |  |
|    | ii) To Vertical Surfaces to Internal Side Walls of Toilet & Kitchen Walls   | 1,420.00 | Sft  |  |  |  |

**Execution of Student Service Centre**

**Tender Documents**

|    |  |        |      |  |  |
|----|--|--------|------|--|--|
| 17 | Providing, fabricating and fixing in position premoulded MS door frames for wooden doors at any height/ floor, doors frame fabricated using 16 gauge M.S. Galvanized sheet bent to shape, provision for hinges, lock, tower bolts and pvc silencers of three sides, including primer and finished with 3 coats of industrial enamel, M.S. flat ties and hold-fasts for lateral movement, PCC 1:2:4 grouting on both sides, complete in all respects as per drawings and specifications, and to the approval of the Engineer.   |        |      |  |  |
|    | i) 10½" x2" Suitable for 9" Thick Plastered Wall   | 35.00  | Rft  |  |  |
| 18 | Provide, make and install solid core Oak wood shutter. The shutter may be paneled, glazed, partly paneled or partly glazed, SS cladding or as specified. The thickness of shutter shall be 1.5" to 2" or as specified. The panels shall be planed and neat and truly finished to the exact dimensions with necessary brass hinges, tower bolts, hock bolts, door stopper, door Silencers, extra screw, etc. Screws should be of suitable length and correct diameter and should be fixed with screw driver not by hammering. All wooden material to be properly treated with termite proofing approved chemical Polyurethane, or any other approved polish finish. rough and finish hardware Complete in all respects and conforming to the requirements of drawings, and to the entire satisfaction of the Project consultants. |        |      |  |  |
|    | i) Door Type D-1, Single Leaf Single Swing: 3'-6" x 7'-0"  | 2.00   | Each |  |  |
| 19 | Supplying, designing, fabricating, testing, commissioning and installing Reinforced Fiber Wood Composite Plastic Laminated or solid core pvc Toilet doors with frames including rust proof hardware, fittings and fixing accessories complete as shown on drawings of M/S Green Door or Solid UPVC board with UV finish of M/S Popular or equal and approved by the Engineer.  |        |      |  |  |
|    | i) 40-mm Thick Toilet Doors  | 110.25 | Sft  |  |  |
| 20 | Providing, fabricating and fixing 12-mm thick fully tempered clear plate glass doors consisting of floor concealed door closer (swing machine, single/double action) best quality imported 900 location applicable for door up to 1050-mm with load bearing range up to 150-Kg by an approved manufacturer, including fittings and fixing accessories, high quality imported glass stainless or CP finish lock and other required hardware, decorative polyester lining to glass work complete as shown on drawings and in   |        |      |  |  |

**Execution of Student Service Centre**

**Tender Documents**

|    |  |        |     |  |  |  |
|----|--|--------|-----|--|--|--|
|    | accordance with the specifications.  |        |     |  |  |  |
|    | i) In Teller Room and Storage Area, Single Swing Doors   | 49.00  | Sft |  |  |  |
|    | ii) In Main Lobby and Entrance Area, Double Swing Doors  | 112.00 | Sft |  |  |  |
| 21 | Providing, fabricating and fixing aluminum glazed partition in 12-mm thick fully tempered clear plate glass and neoprene glazing gaskets or similar approved and polypropylene weather stripping around glass, by an approved manufacturer comprising aluminum frame size 100 x 50 mm to hold 5mm glass and approved color matching with existing finish to aluminum frames and glass, including decorative polyester lining to glass work complete as shown on drawings and in accordance with the specifications.  |        |     |  |  |  |
|    | i) For Teller Room and Storage Area  | 388.50 | Sft |  |  |  |
| 22 | Providing and fixing Frosting -- mm thick film on glass window complete in all respect as per drawings, specifications & instructions of the Architect.  | 230.00 | Sft |  |  |  |
| 23 | Provide and fix in position fully double glazed aluminum windows and ventilators consisting of glazed open able panels with fly screen 140-mm x 50-mm and 2-mm section in champagne anodized or any other approved finish with 26-mm thick vacuum tinted glass, ( 6-mm thick clear glass inner side + 12-mm thick air spacer + 8-mm thick tempered glass) for windows. Glass shall be of the best quality and free from bubbles, scratches, and other imperfections. The glass shall be fixed in aluminum frame leaving 1.5-mm clear gap all-round for allowing for expansions with 2-mm thickness of section and 20 micron anodic film of approved make or its equivalent make as indicated on the drawings and approved by the Project Engineer , using stainless steel screw, glazed, PVC glazing channel weathered strip between open able portion and aluminum trimming complete with handle, lock, application of silicone for joints etc. complete in all respects and conform to the requirements of drawings, specifications and to the entire satisfaction of the Project Consultants. |        |     |  |  |  |
|    | i) Aluminum Double Glazed Windows with 8-mm Thick Tinted Glass   | 320.00 | Sft |  |  |  |
|    | ii) Aluminum Single Glazed Windows with 5mm  |        | Sft |  |  |  |

**Execution of Student Service Centre**

**Tender Documents**

|    |  |          |     |  |  |  |
|----|--|----------|-----|--|--|--|
|    | Thick Frosted Glass  | 36.00    |     |  |  |  |
| 24 | Supply and install ceramic tiles in approved color, pattern, design and shape including bedding screed of 3,000-PSI cylinder strength and 1:3 C.S. base mortar, grout and grouting with matching color, pointing, cleaning, scaffolding and its removal complete with all necessary material and accessories in accordance with the Specifications and as shown on Drawings.       |          |     |  |  |  |
|    | i) Non-skid tiles 24"x12" size in Bath Rooms Flooring with Minimum Cost of Rs. 4000/m <sup>2</sup>   | 350.00   | Sft |  |  |  |
|    | ii) Glazed tiles 24"x12" in Bath Rooms & Kitchen Wall Dado/Facing with Minimum Cost of Rs. 4000/m <sup>2</sup>   | 1,400.00 | Sft |  |  |  |
| 25 | Supply and Install porcelain clay tiles of an approved manufacturer in approved color pattern, design and shape including bedding screed of 3000-psi cube strength and base mortar 1:3 , pigments, grout and grouting with matching color, pointing, cleaning complete with all necessary material and accessories in accordance with the Specifications and as shown on Drawings. |          |     |  |  |  |
|    | i) Non-Skid Smooth Textured Porcelain Tile Flooring with SS Inserts (24"x48") with Cost up to Rs. 4500/m <sup>2</sup> of Approved Size, Color.Shade and Sample by the Engineer at Time of Bidding.   | 3,340.00 | Sft |  |  |  |
|    | ii) Non-Skid Wooden Textured Porcelain Tile Flooring (6"x36") Installed in Herringbone pattern with Cost up to Rs. 4500/m <sup>2</sup> of Approved Size, Color and Shade by the Engineer at Time of Bidding.   | 375.00   | Sft |  |  |  |
|    | iii) Non-Skid Wooden Textured Porcelain Tile Flooring (6"x24")with Cost up to Rs. 4500/m <sup>2</sup> of Approved Size, Color and Shade by the Engineer at Time of Bidding.  | 550.00   | Sft |  |  |  |
|    | iv) 4" High Glazed Tile Skirting to Room Walls with Minimum Cost of Rs. 4500/m <sup>2</sup> of Approved Size, Color and Shade by the Engineer at Time of Bidding.  | 280.00   | Sft |  |  |  |
|    | v) Non-skid tiles 24"x12" size in Kitchen Flooring with Minimum Cost of Rs. 4000/m <sup>2</sup>  | 125.00   | Sft |  |  |  |
|    | vi) Non-skid tiles 24"x12" size in Storage Area Flooring with Minimum Cost of Rs. 4000/m <sup>2</sup>  | 320.00   | Sft |  |  |  |

**Execution of Student Service Centre**

**Tender Documents**

|    |  |          |      |  |  |
|----|--|----------|------|--|--|
| 26 | Supplying and installing decorative polyester powder coated Dampa Metal Ceiling System including imported aluminum suspension system, access panels, bulk heads, cornices, moldings, Sound absorb[ton fabric layers/pads, fixing PVC tape over all joints, filling and leveling joints with approved non shrinkable bonding materials, provision of opening for lights, inspection and maintenance removable panels, along with fittings and fixing accessories complete in all respects as shown in drawings, in accordance with the specifications and to the approval of the Engineer.  |          |      |  |  |
|    | i) Dampa Metal Suspended Ceiling System In Storage Area  | 325.00   | Sft  |  |  |
| 27 | Supplying and installing decorative Plaster of Paris false ceiling including imported aluminum suspension system, access panels, cutting holes for recess lights, bulk heads, down drops cornices, moldings, fixing pvc tape over all joints, filling and leveling joints with approved non shrinkable bonding materials, finishing the false ceiling with plastic emulsion paint by ICI or equivalent in approved pattern, shape, color, shade , texture, fittings and fixing accessories complete in all respects as shown in drawings, in accordance with the specifications and to the approval of the Engineer. (Flat Area Shall be Measured for Payment) |          |      |  |  |
|    | i) ½"-Thick Reinforced POP Plain False Ceiling   | 470.00   | Sft  |  |  |
|    | ii) ½"-Thick Reinforced POP Decorative False Ceiling Including Hardboard Tiles/Ply Wood Pasting Over False Celing  | 1,815.00 | Sft  |  |  |
|    | iii) ½"-Thick Reinforced POP Moisture Resistant Plain False Ceiling in Wet Area  | 2,350.00 | Sft  |  |  |
| 28 | Supply and fix ¾" thick approved granite Vanity top slab around WHB with splash block and brackets etc. including cutting in shape with machine, rubbing, polishing, and making the joints water tight, fixed to concrete, masonry work complete as shown on drawing and as specified  |          |      |  |  |
|    | i) Vanity type -V1: 6'-0"x2'-0" long with 2 Cut Holes  | 1.00     | Each |  |  |
|    | ii) Vanity type -V2: 8'-1½"x2'-0" long with 3 Cut Holes  | 1.00     | Each |  |  |
| 29 | Supplying and fixing the Venetian blind having Rolling Fabric width of desired shades, best quality manually adjustable by stainless steel chain complete with all fittings and fixing accessories complete in all respects as per drawings, specification and approval of the   |          |      |  |  |

**Execution of Student Service Centre**

**Tender Documents**

|    |   |        |     |  |  |  |
|----|---|--------|-----|--|--|--|
|    | Engineer.   |        |     |  |  |  |
|    | i) Fabric Strip Venetian Vertical Blinds  | 380.00 | Sft |  |  |  |
|    |   |        |     |  |  |  |
| 30 | Provide and install in position composite and mix type furniture, best quality class "A-Plus" locally manufactured from fully seasoned wood free from knots, decay and any other defects and laminated HDF board with steel supporting system including preservative treatment, Pakistan stylish and cultural look, exposed wood work finished with NC transparent lacquered finish including preparation of surface one coat of NC sanding sealer 3-5 Micrometers and 2nd coat of transparent Nitrocellulose based finish @ 15-20 Micrometer of M/S ICI or equal and approved or Deco/polyurethane clear lacquer and plastic polyester powder coated finish @ 25 Micrometer to steel work including all supports to permanent dimensional stability, fittings and fixing accessories, all components must meet the testing and quality requirement of Pakistan Standards and Quality Control Authority (PSQCA) or International Slandered with 10 year replace able Warranty complete in all respects as shown on Drawings and Specifications. |        |     |  |  |  |
|    |   |        |     |  |  |  |
|    | i) Staff Table with Right Side Rack (5'-0" x 2'-3" x 2'-6"+2'-6"x1'-3"x2'-6") Structure made of MDF / PVC / MS Pipe / Sheet Black Powder Coated Painted Frame / Black Polish in Teller Room   | 1.00   | Sft |  |  |  |
|    |   |        |     |  |  |  |
|    | ii) Staff Table with Right Side Rack (4'-3" x 2'-3" x 2'-6"+2'-3"x1'-3"x2'-6") Structure made of MDF / PVC / MS Pipe / Sheet Black Powder Coated Painted Frame / Black Polish in Entrance Lobby Area  | 1.00   | Sft |  |  |  |
|    |   |        |     |  |  |  |
|    | iii) Moveable Tables (4'-0"x2'-0"x2'-6") as shown on Drawing Detali # J   | 8.00   | Sft |  |  |  |
|    |   |        |     |  |  |  |
|    | iv) Credenza with 4 Panels (L=8'-0"x1'-4"xD 2'-6") Oak Wood, Oak Ply Wood/ Veneer Board, Walnut Two Tone Polish in Teller Room  | 3.00   | Sft |  |  |  |
|    |   |        |     |  |  |  |
|    | v) Centre Table 3/4" Thick UV Laminated MDF Top and M.S Powder Coated Frame and Legs: 4'-0"x 2'-0"x1'-4" in In Student Sitting Pods as Shown on Drawing Detail "D"  | 5.00   | Sft |  |  |  |
|    |   |        |     |  |  |  |
|    | vi) Circular Corner/side Tables with 3/4" Thick UV Laminated Top with M.S. Deco Finsed Frame :1'-4" Dia. In Waiting Area  | 10.00  | Sft |  |  |  |
|    |   |        |     |  |  |  |



**Execution of Student Service Centre**

**Tender Documents**

|  |  |       |     |            |  |  |
|--|--|-------|-----|------------|--|--|
|  | vii) Revolving Teller's Chair, with Mesh Back Foam Seaters High Back, Nylon Base and Casters, 2-Years Exclusive Workspace Warranty                 | 12.00 | Sft |            |  |  |
|  |  |       |     |            |  |  |
|  | viii) Mesh Normal Foam+ Recycle Foam Back: Black Plastically Fix PP Arm Tilt Mechanism Gas-Spring : 100# Base : 300 Chrome Leg Castor Nylon Castor | 8.00  | Sft |            |  |  |
|  |  |       |     |            |  |  |
|  | ix) Visitor Chair, Sheesham Wood, Leatherette  | 3.00  | Sft |            |  |  |
|  |  |       |     |            |  |  |
|  | x) 3-Seater Sofas with Jute Fabric and Viscos on Top for More Durability. Molty A-Grade Foam and Wooden Footers                                    | 29.00 | Sft |            |  |  |
|  | <b>Total Cost Of Civil Works (Non MRS Items)</b>   |       |     | <b>Rs.</b> |  |  |

Execution of Student Service Centre

Tender Documents

**The Islamia University of Bahawalpur**  
**CONSTRUCTION OF STUDENT COUNSELING AREA AT ISLAMIA UNIVERSITY OF**  
**BAHAWALPUR**  
**BILL OF QUANTITIES**  
**PUBLIC HEALTH & GAS SUPPLY WORKS**  
**NON MRS ITEMS**

| SR # | DESCRIPTION   | QUANTITY | UNIT | UNIT RATE Rs | AMOUNT Rs | Remarks |
|------|---|----------|------|--------------|-----------|---------|
| (1)  | (2)   | (3)      | (4)  | (5)          | (6)       | (7)     |
| 1    | Removing Removal of all type wiring Plumbing, i/c all useless material as in the proposed area of the building including stacking/ handing over of useable material to the Client, complete in all respects in order to commence the construction work, to the satisfaction of the Client & Consultants.  | 1.00     | L/S  |              |           |         |
|      | Supply, install, test and maintain as per specifications and as shown on drawings uPVC class-as indicated below pipes sanitary drainage above and under ground Pipes shall include approved quality solvent Cement jointing, all uPVC pipe fittings and all accessories necessary to complete the work  |          |      |              |           |         |
| 2    | 1" dia. Class "E" for condensate water drainage   | 250.00   | Rft  |              |           |         |
| 3    | 2" dia. Class "D"   | 60.00    | Rft  |              |           |         |
| 4    | 3" dia. Class "B"   | 50.00    | Rft  |              |           |         |
| 5    | 4" dia. Class "B"   | 70.00    | Rft  |              |           |         |
| 6    | 6" dia. Class "B"   | 60.00    | Rft  |              |           |         |
|      | Supply, install, test and maintain as per specifications and as shown on drawings, uPVC class-as indicated below vent pipes. Pipes shall include all uPVC pipe fittings and all accessories necessary to complete the work.   |          |      |              |           |         |
| 7    | 2" dia. Class "D"   | 50.00    | Rft  |              |           |         |
| 8    | 3" dia. Class "B"   | 60.00    | Rft  |              |           |         |
| 9    | Ventilation Cowl  |          |      |              |           |         |
| 10   | 2" dia.   | 5.00     | Each |              |           |         |
| 11   | 3" dia.   | 5.00     | Each |              |           |         |
|      | Supply, install, test and maintain domestic cold water polypropylene (PPRC) with minimum working pressure 15-bars at 20C° "Tigris, Green" or approved equal pressure pipe for cold water supply as per DIN 8077-8088 for pipes and DIN 16962 for fitting (poly fusion welded joints) inside building including specials (sockets, tees, elbows, bends, crosses, reducers, plug and union etc.) supported on walls or suspended from roof slab or run in chase including pipe hangers, supports, cutting and making good the chases and holes, complete in all respect as shown on drawings and in accordance with the Specifications. |          |      |              |           |         |
| 12   | ¾" dia. l/d (25mm Ø)  | 140.00   | Rft  |              |           |         |
| 13   | 1" dia. l/d (32mm Ø)  | 70.00    | Rft  |              |           |         |
| 14   | 1¼" dia. l/d (40mm Ø)   | 50.00    | Rft  |              |           |         |

**Execution of Student Service Centre**

**Tender Documents**

|    |   |       |      |  |  |
|----|---|-------|------|--|--|
|    | Supply, install, test and maintain, domestic hot water composite pipe PAP (PE-AL-PE with Aluminum PN 20) or (PP-R-80 with Aluminum PN 20) pipe line with minimum working pressure 20 bars at 96-100C° confirming with the ASTM F 1281 & ASTM F 1282 for hot water line and brass fittings conforming to DIN 2999 and DIN 8076 for fitting including specials (sockets, tees, elbows, bends, crosses, reducers, plug and union etc.) supported on walls or suspended from roof slab or run in chase including pipe hangers, supports, cutting and making good the chases and holes, complete in all respect. |       |      |  |  |
| 15 | 3/4" dia.   | 70.00 | Rft  |  |  |
| 16 | 1" dia.   | 30.00 | Rft  |  |  |
|    | Supply and install Gate Valves, bronze body, threaded ends, class 150, rising stem, for hot, cold water lines including all fittings and fixing accessories complete as shown on drawings and in accordance with the Specification.   |       |      |  |  |
| 17 | Ø3/4" NPS.  | 6.00  | Each |  |  |
| 18 | Ø 1" NPS  | 2.00  | Each |  |  |
|    | Supply, test and install Non-return valve or reflux valve, screwed, including fittings and fixing accessories complete as shown on drawings and in accordance with the Specifications.  |       |      |  |  |
| 19 | Non-return Valves:Ø 25 mm   | 2.00  | Each |  |  |
| 20 | Non-return Valves:Ø 32 mm   | 2.00  | Each |  |  |
| 21 | Supply, install, test and maintain as per specifications and as shown on drawings, Back flow Preventers for with all accessories necessary to complete the work   |       |      |  |  |
|    | 1" dia  | 2.00  | Each |  |  |
| 22 | Supply, install Grohe Lexus Double Bib Cocks Item Code 077 including Shatal Toilet hand shower with flexible pipe, wall stand of Master/Sonex or equal and approved   | 7.00  | Each |  |  |
| 23 | Supply, install Wall Shower Mixture with adjustable shower rose Type-030 of Master  | 7.00  | Each |  |  |
|    | Providing and fixing MDPE (Medium Density Polyethylene) pipe comply with the ASTM B 31.8, ASTM D 2513, ISO 4437, SNGP, gas operated geyser, Kitchen and heaters including all required fittings, fixing accessories, jointing of PE pipe and fittings is enclosed. Only Bar coded electro fusion machine (Automatically Readable) that can read the bar code of the fittings automatically shall be used for jointing of MDPE pipe/fittings. Testing and commissioning complete as shown on drawings and in accordance with the Specifications.   |       |      |  |  |

**Execution of Student Service Centre**

**Tender Documents**

|    |   |       |      |  |  |  |
|----|---|-------|------|--|--|--|
| 24 | Ø 1-Inch- I/d, Yellow PE 80, SDR-11   | 25.00 | Rft  |  |  |  |
| 25 | Ø 3/4-Inch-I/d, Yellow PE 80, SDR-11  | 50.00 | Rft  |  |  |  |
|    | Providing and installing including cost of materials labor and equipment, of gun-metal high-pressure special designed for gasworks valves of following nominal dia, Kitz make, including jointing, fittings and fixing accessories, painting and testing complete as shown on drawings  |       |      |  |  |  |
| 26 | Ø 1 Inch  | 1.00  | Each |  |  |  |
| 27 | Ø 3/4 Inch  | 4.00  | Each |  |  |  |
| 28 | Supply, test, commission, install and maintain automatic instant gas water heater wall mounted consisting of stainless steel cover plate, copper pipes and gas nozzles, spark indicator, temperature control knob, Stainless steel cover plate bolts, exhausts deflector, heat exchanger, burners, copper gas valve, electronic controller, water flow control valve, safety valve, battery case, with suitable safety shade protected, plumbing connections of inlets and outlets from Ambassador/Dynamar Pakistan/Cannon/Singer or equivalent, including fitting and fixing accessories complete in all respects as shown on drawings or as directed of the following capacities. |       |      |  |  |  |
|    | Automatic Water Heater @ 12 Liters Model Capacity   | 3.00  | Each |  |  |  |
| 29 | Supply, testing, commissioning and installing Refillable Seamless Steel Gas Cylinder conforming to Standard PS-3394 with Pressure Regulator conforming to Standard PS-3825 and Valve Outlets conforming to PS-4314 including fittings and fixing accessories as shown on Drawings and in accordance with the ISO Standards and approval of the Engineer.  |       |      |  |  |  |
|    | 90-Kg Bottle Seamless Portable Gas Cylinder   | 2.00  | Each |  |  |  |
| 30 | Supply and install Wall mounted liquid soap dispenser approved including fittings and fixing accessories as shown on drawings, in accordance with the specifications and to the approval of the Engineer.   | 4.00  | Each |  |  |  |
| 31 | Supply and install Wall mounted Towel Ring Type circular with round stainless steel satin finish and forged chrome plated brass brackets with concealed mounting brackets as shown on drawings, in accordance with the specifications and to the approval of the Engineer.  | 4.00  | Each |  |  |  |

**Execution of Student Service Centre**

**Tender Documents**

|  |   |       |      |            |  |  |
|--|---|-------|------|------------|--|--|
| 32   | Supply and install Wall mounted Forged brass coat hook with polished stainless steel finish. as shown on drawings, in accordance with the specifications and to the approval of the Engineer.   | 11.00 | Each |            |  |  |
| 33   | Supply and install Floor mounted WC brush holder in stainless steel grade 302 ceramic finish. as shown on drawings, in accordance with the specifications and to the approval of the Engineer.  | 7.00  | Each |            |  |  |
| 34   | Supply and install Surface Wall Mounted Injection Moulded Acrylic Plastic Automatic Panel Spray Toilet Dispenser in Matching Color with Tiles. as shown on drawings, in accordance with the specifications and to the approval of the Engineer.   | 2.00  | Each |            |  |  |
| 35   | Provide and install kitchen and laundry equipment including all mechanical and electrical connections, fittings and fixing accessories, made by Smeg / Siemens / Pakeeza / Ambassadors / Canon or equal and approved complete as shown on Drawings and in accordance with the Specifications.   |       |      |            |  |  |
|  | Gas Fired, 5-Burner Range W/Oven: 1350 x 900 x 850 mm   | 1.00  | Each |            |  |  |
| 36   | Provide and install stainless steel kitchen fume hood and ventilation system equipment including section fans with grease filter removable and washable grill, exhaust duct with exhaust fan, all mechanical and electrical connections, fittings and fixing accessories complete as shown on Drawings and in accordance with the Specifications. |       |      |            |  |  |
|  | S/S Exhaust Hood: 1000W x 700D x 600H with Grease Traps   | 1.00  | Each |            |  |  |
| <b>Total Cost Of Plumbing &amp; Gas Supply Works (Non MRS Items)</b> |   |       |      | <b>Rs.</b> |  |  |

Execution of Student Service Centre

Tender Documents

**The Islamia University of Bahawalpur**  
**CONSTRUCTION OF STUDENT COUNSELING AREA AT ISLAMIA UNIVERSITY OF**  
**BAHAWALPUR**  
**BILL OF QUANTITIES**  
**HVAC WORKS**  
**NON MRS ITEMS**

| SR # | DESCRIPTION   | QUANTITY | UNIT | UNIT RATE Rs | AMOUNT Rs | Remarks |
|------|---|----------|------|--------------|-----------|---------|
| (1)  | (2)   | (3)      | (4)  | (5)          | (6)       | (7)     |
|      | <b>Fixtures</b>   |          |      |              |           |         |
|      | <b><u>SUPPLY VRF DC INVERTER HVAC SYSTEM</u></b>  |          |      |              |           |         |
| 1    | Supply of air cooled VRF inverter based outdoor units with micro processor controller and all relevant controls, including loading/unloading & uplifting etc.<br>Type CU-01, Model GMV-900WM/B-X or equal and Approved. | 1.00     | Each |              |           |         |
|      | Supply of multiple indoor units for 4-Way Cassette Type VRF system as shown in drawing including loading/unloading & uplifting etc.   |          |      |              |           |         |
| 2    | Type CIU-01, Model GMV-ND112T/A-T or equal and Approved.  | 1.00     | Each |              |           |         |
| 3    | Type CIU-02, Model GMV-ND160T/A-T or equal and Approved.  | 5.00     | Each |              |           |         |
|      | Supply Energy Recovery Ventilator as shown in drawing including loading/unloading & uplifting etc   |          |      |              |           |         |
| 4    | Type ERV-01, Model FHBQ-D15-K or equal and Approved.  | 1.00     | Each |              |           |         |
|      | Supply, Fabrication and Installation of G.I. ducting & Sheet Metal work complete with hangers, bracings, etc. -   |          |      |              |           |         |
| 5    | 24-SWG  | 1,325.00 | Sft  |              |           |         |
|      | Supply and Installation Of Duct Insulation Of Fiber Glass Blanket (Frk) 24-Kg/m <sup>3</sup> With Adhesives, Sealers, Aluminum Tape & Protected With 8oz Canvas Cloth.  |          |      |              |           |         |
| 6    | 1-Inch Thick  | 1,325.00 | Sft  |              |           |         |
|      | Supply & installation of Aluminum made air devices as shown in drawings   |          |      |              |           |         |
| 7    | Air Diffusers   | 7.00     | Sft  |              |           |         |
| 8    | Louvers   | 7.00     | Sft  |              |           |         |
|      | Supply & installation of 18-Gauge GI sheet metal volume control dampers (vcd) as shown in drawings  |          |      |              |           |         |
| 9    | Volume Control Dampers  | 4.00     | Sft  |              |           |         |
|      | Supply & installation of Fiber Glass Sound Liner of density 24-Kg/m <sup>3</sup> complete with adhesives and sealers.   |          |      |              |           |         |
| 10   | 1-Inch Thick  | 400.00   | Sft  |              |           |         |

**Execution of Student Service Centre**

**Tender Documents**

|    |  |        |      |  |  |
|----|--|--------|------|--|--|
| 11 | Supply & installation of pre-assembled flexible duct connectors factory fabricated with coated woven fabric and G.I. Collars both by means of double lock seam on each side  |        |      |  |  |
|    | Flexible Duct Connectors   | 45.00  | Rft  |  |  |
|    | Supply and Installation of Gas & Liquid Copper Piping for VRF A/c System Complete with(5/8" thick) Aero flex insulation, control wiring between indoor units and outdoor units, nitrogen pressure testing, flushing, gas charging, accessories, clamping and other related material for installation purpose |        |      |  |  |
| 12 | Φ 3/8"   | 125.00 | Rft  |  |  |
| 13 | Φ 1/2"   | 45.00  | Rft  |  |  |
| 14 | Φ 5/8"   | 40.00  | Rft  |  |  |
| 15 | Φ 3/4"   | 210.00 | Rft  |  |  |
| 16 | Φ 1"   | 45.00  | Rft  |  |  |
| 17 | Φ 1-1/8"   | 25.00  | Rft  |  |  |
| 18 | Φ 1-1/4"   | 105.00 | Rft  |  |  |
|    | Supply & installation of copper y- joints with insulation.   |        |      |  |  |
| 19 | Type Y-1, Model FQ02/A   | 3.00   | Each |  |  |
| 20 | Type Y-2, Model FQ03/A   | 2.00   | Each |  |  |
|    | Supply & installation of Upvc drain pipes with all fittings for condensate drain with (5/8" thick) Aero flex insulation covered with PVC taping as shown in drawings.  |        |      |  |  |
| 21 | Φ 1"   | 95.00  | Rft  |  |  |
| 22 | Φ 1-1/4"   | 90.00  | Rft  |  |  |
|    | Supply & installation of G.I cable tray with cover for expose copper piping  |        |      |  |  |
|    | 18" Wide   | 50.00  | Rft  |  |  |
|    | Supply and installation of auto control system including cabling supplied with VRF system.   | 1.00   | Lot  |  |  |
|    | <b><u>INSTALLATION VRF DC INVERTER HVAC SYSTEM</u></b>   |        |      |  |  |
| 25 | Installation of air cooled VRF inverter based outdoor units with micro processor controller and all relevant controls, including loading/unloading & uplifting etc.  |        |      |  |  |
|    | Type CU-01, Model GMV-900WM/B-X or equal and Approved.   | 1.00   | Each |  |  |
|    | Installation of multiple indoor units for 4-Way Cassette Type VRF system as shown in drawing including loading/unloading & uplifting etc.  |        |      |  |  |
| 26 | Type CIU-01, Model GMV-ND112T/A-T or equal and Approved.   | 1.00   | Each |  |  |
| 27 | Type CIU-02, Model GMV-ND160T/A-T or equal and Approved.   | 5.00   | Each |  |  |

**Execution of Student Service Centre**

**Tender Documents**

|   |   |      |      |            |  |  |
|---|---|------|------|------------|--|--|
| 28  | Installation of Energy Recovery Ventilator as shown in drawing including loading/unloading & uplifting etc. |      |      |            |  |  |
|   | Type ERV-01, Model FHBQ-D15-K or equal and Approved.  | 1.00 | Each |            |  |  |
|   |   |      |      |            |  |  |
| 29  | Painting and equipment identification of all hvac equipment, ducting, piping as shown in drawings           | 1.00 | Lot  |            |  |  |
|   |   |      |      |            |  |  |
| 30  | Testing & commissioning including air balancing of complete system  | 1.00 | Lot  |            |  |  |
|   |   |      |      |            |  |  |
| <b>Total Cost Of HVAC Works (Non MRS Items)</b> |   |      |      | <b>Rs.</b> |  |  |



Execution of Student Service Centre

Tender Documents

**The Islamia University of Bahawalpur**  
**CONSTRUCTION OF STUDENT COUNSELING AREA AT ISLAMIA UNIVERSITY OF**  
**BAHAWALPUR**  
**BILL OF QUANTITIES**  
**ELECTRICAL WORKS**  
**NON MRS ITEMS**

| SR # | DESCRIPTION  | QUANTITY | UNIT | UNIT RATE<br>Rs | AMOUNT<br>Rs | Remarks |
|------|--|----------|------|-----------------|--------------|---------|
| (1)  | (2)  | (3)      | (4)  | (5)             | (6)          | (7)     |
|      | <b>General</b>   |          |      |                 |              |         |
|      | All items of Electrical works described under title "Description" unless specifically indicated otherwise, shall be deemed to be read in terms of supply, storing, protecting, making,   |          |      |                 |              |         |
|      | assembling, installing, applying, laying, fixing, testing commissioning, clearing etc. of the same inclusive of but not limited to all materials, labour, tools, plants equipments, appliances etc. as required for the completion and maintenance of the Electrical work as per drawings specifications, and/or as directed by the Engineer Incharge. |          |      |                 |              |         |
| 1    | Removing Removal of all type wiring Electrical, i/c all useless material as in the proposed area of the building including stacking/ handing over of useable material to the Client, complete in all respects in order to commence the construction work, to the satisfaction of the Client & Consultants.   | 1.00     | L/S  |                 |              |         |
|      | <b><u>WIRING DEVICES AND RECEPTCLS</u></b>   |          |      |                 |              |         |
|      | Providing, installation and commissioning of following wiring devices / light control switches / power receptacles as per BS Standards including 16 SWG MS Powder Coated back boxes, flush with wall as shown in drawing and details.(Make Legrand,clipse)   |          |      |                 |              |         |
|      | <b>Light Controlled Switches</b>   |          |      |                 |              |         |
| 2    | One Gang one way 10-A Switch   | 1.00     | Nos. |                 |              |         |
| 3    | Two Gang one way 10-A Switch   | 5.00     | Nos. |                 |              |         |
| 4    | Three Gang one way 10-A Switch   | 16.00    | Nos. |                 |              |         |
| 5    | Four Gang one way 10-A Switch  | 4.00     | Nos. |                 |              |         |
|      | <b>Utility / Conditioned Power Receptacles</b>   |          |      |                 |              |         |
| 6    | 10A, Simplex Multi Pin Switch Socket Unit  | 106.00   | Nos. |                 |              |         |
|      | <u>Providing, Installation, testing and commissioning of 63-A 3-Pin Industrial Sockets for UPS incoming and outgoing cables for IT.</u>  |          |      |                 |              |         |
| 7    | Industrial Sockets   | 2.00     | Nos. |                 |              |         |
|      |  |          |      |                 |              |         |

**Execution of Student Service Centre**

**Tender Documents**

|    |   |        |      |  |  |  |
|----|---|--------|------|--|--|--|
| 8  | <u>22" x 5" x 4" surface wall mounted technology box powder coated including front open able cover suitable for installation of 3 No. 13 A , multipin switch socket and 2No. RJ-45 outlets for voice and data. (Rates with out socket outlets )</u>   |        |      |  |  |  |
|    | Technology Box  | 26.00  | Nos. |  |  |  |
|    | <b><u>FITTINGS AND FIXTURES</u></b>   |        |      |  |  |  |
|    | <b><u>LED LIGHT</u></b>   |        |      |  |  |  |
|    | Supply, installation, testing and commissioning of following lighting fixture & fittings including all mounting accessories, electronic ballast, driver, lamps, mountings steel rope etc. Complete in all respects.   |        |      |  |  |  |
|    | Note :<br>1. The P.F of all the light fixtures shall be greater than 0.9.<br>2. All light fixtures shall have CRI >80<br>3. The light fixtures shall have efficacy higher than 85lm/W<br>4. The color of light fixture shall be either 3000K , 4000K or 6000K (as approved by Architect & Client).  |        |      |  |  |  |
| 9  | LED Light fixture circular shape, with 12W / 15W SMD. Complete in all respect. (Philips , osram or equivalent).   | 176.00 | Nos. |  |  |  |
| 10 | LED Smart Panel (600mm' x 600mm) 40/48W SMD. Complete in all respect. (Philips , osram or equivalent)   | 9.00   | Nos. |  |  |  |
| 11 | LED Batten light fixture 40W SMD, Complete in all respect. (Philips , osram or equivalent)  | 40.00  | Nos. |  |  |  |
| 12 | Installation & connecting up of Pendant light (Owner Supplied)  | 21.00  | Nos. |  |  |  |
|    |   |        |      |  |  |  |
| 13 | Supply, installation and commissioning of Bracket fan complete all necessary fixing accessories complete in all respect manufactured by PAK, Climax, Asia.  |        |      |  |  |  |
|    | 24"-Bracket Fans  | 1.00   | Nos. |  |  |  |
|    |   |        |      |  |  |  |
|    | <b><u>L.T. SWITCHGEAR &amp; Power Cables</u></b>  |        |      |  |  |  |
|    | Supply, Installation and Commissioning of wall recessed/ mounting type Distribution Boards fabricated from 16-SWG sheet steel, derusted phosphated with electrostatic paint of approved color and with back box, comprising of incoming three phase moulded case circuit breakers (as specified) and outgoing single phase miniature circuit breakers as given below, complete with internal wiring earthing, neutral link, termination blocks and cable chamber at the top of the DB. Each DB shall have digital voltmeter, voltmeter/selector switch, phase indication lights & control fuses on incoming. PVC slotted duct to be installed in three side of DB. All breakers & instrumentation and other materials make as per manufacturers list attached . It shall be |        |      |  |  |  |

**Execution of Student Service Centre**

**Tender Documents**

|    |  |       |      |  |  |
|----|--|-------|------|--|--|
|    | manufactured by any one of the manufacturers as mentioned in Annexure "A" and conforming to single line diagram  |       |      |  |  |
|    | <b>Incoming-1</b>  |       |      |  |  |
|    | 1- 100 Amps TP 25 KA, MCCB   |       |      |  |  |
|    | 3-Phase indication lamps (LED Type)  |       |      |  |  |
|    | 1-Digital Volt meter   |       |      |  |  |
|    | <b>Outgoing-1</b>  |       |      |  |  |
|    | 1- 63 Amps TP 10 KA, MCCB  |       |      |  |  |
|    | 1- 40 Amps TP 10 KA, MCCB  |       |      |  |  |
|    | 1- 63 Amps DP 6 KA, MCB  |       |      |  |  |
|    | 36-6/10/20 Amps S.P, 6 KA, MCBs  |       |      |  |  |
|    | <b>Incoming-2</b>  |       |      |  |  |
|    | 1-63 Amps TP Change Over Switch  |       |      |  |  |
|    | 1-Phase indication lamp  |       |      |  |  |
|    | <b>Outgoing-2</b>  |       |      |  |  |
|    | 18-6/10 Amps S.P, 6 KA, MCBs   |       |      |  |  |
| 14 | Distribution Board ("Light & Power") DB-LP   | 1.00  | Nos. |  |  |
|    |  |       |      |  |  |
| 15 | Supply, Laying & Connecting up of 600/1000-volt grade single /4/3.5 core PVC insulated or PVC sheathed copper conductor cables as specified, make FAST/NEWAGE/POINEER or PAKISTAN Cable of following size. , <i>approximate length of cables are shown herewith. Payments shall be made as per actual length installed.</i>  |       |      |  |  |
|    | 4-Core 10-mm <sup>2</sup> , cable  | 55.00 | Rft  |  |  |
|    |  |       |      |  |  |
|    | <b><u>EARTHING SYSTEM</u></b>  |       |      |  |  |
| 16 | Supply and Installation of 1½" dia & 10 ft long 16-SWG copper pipe fill with earth chemical to be lowered in 30 feet deep 4" dia bore hole, complete with lugs from bottom and top of pipe rod to ground surface earth connecting point of the pipe & bore hole to be filled with earth chemical model GEM 25A of ERICO, complete with 1x 25mm <sup>2</sup> stranded copper conductor from earth pipe to ground surface in 1" dia PVC pipe with breather hole (length 5 feet only).Earth pit comprising of 8" dia, 8" deep polyvinyl chloride (PVC) Cylinder type with heavy duty aluminum cover, Complete in all respect., as per detail shown in drawings. |       |      |  |  |
|    | Earthing System Bore Type  | 2.00  | Nos. |  |  |
|    |  |       |      |  |  |

**Execution of Student Service Centre**

**Tender Documents**

|    |   |       |      |  |  |
|----|---|-------|------|--|--|
|    | Supply & Installation of following sizes of PVC insulated green color single core copper conductor cables in and including 1" dia PVC/M.S. conduits or laid in cable trays or installed on vertical surfaces complete with cable lugs, ties, P.G. clamps markers and accessories as required complete in all respects.  |       |      |  |  |
|    | Actual Length of cables are approximate, contractor shall be paid as per actual length of cables installed.   |       |      |  |  |
| 17 | 25-mm <sup>2</sup>  | 30.00 | Rft  |  |  |
| 18 | 16-mm <sup>2</sup>  | 40.00 | Rft  |  |  |
|    |   |       |      |  |  |
|    | <b><u>DATA NETWORK SYSTEM</u></b>   |       |      |  |  |
| 19 | Wiring for each data network point with 4-pair Cat-6 UTP cable make Clipsal/3M from patch panel to each data network point in and including cost of 1"-Dia PVC conduit dia as shown on drawing, recessed in slab, floors, walls, columns, above false ceiling or on slab or as required as per site condition, including cost of 1-Computer Outlet make Clipsal or 3M. All necessary materials and accessories , complete in all respect. |       |      |  |  |
|    | Data Network Point  | 28.00 | Nos. |  |  |
|    |   |       |      |  |  |
| 20 | Installation & Connecting up of patch panels of 24 ports make CLIPSAL/3M,   |       |      |  |  |
|    | Patch / Drop Cords Data   | 2.00  | Nos. |  |  |
|    |   |       |      |  |  |
|    | Category-6 Factory Certified tangle free RJ-45 to RJ-45 type patch / drop cords in required colors having following lengths for interconnection of switches and patch panels.   |       |      |  |  |
| 21 | 1-Meter long patch cords for data.  | 28.00 | Nos. |  |  |
| 22 | 3-Meter long drop cord for data.  | 28.00 | Nos. |  |  |
|    |   |       |      |  |  |
| 23 | Supply and Installation of lockable flush wall mounted double section cabinet size 12 U suitable for patch panels and computer switch including PDU/4x13A flat pin switch socket outlet, complete with all accessories.   |       |      |  |  |
|    | Data Cabinet & PDU  | 1.00  | Nos. |  |  |
|    |   |       |      |  |  |
| 24 | Installation & Connecting up of 24 ports giga bit Networking Switch.  |       |      |  |  |
|    | Networking Switch   | 2.00  | Nos. |  |  |
|    |   |       |      |  |  |
| 25 | Providing of Fluke Test Report & schneider /3M Certificate (Complete as per Client's requirement )  |       |      |  |  |
|    | Testing and Commissioning   | 1.00  | Nos. |  |  |
|    |   |       |      |  |  |
|    | <b><u>VOICE NETWORKING SYSTEM</u></b>   |       |      |  |  |

**Execution of Student Service Centre**

**Tender Documents**

|    |   |       |      |  |  |  |
|----|---|-------|------|--|--|--|
| 26 | Wiring for each telephone point with 4-Pair Cat-6 (UTP) cable make Clipsal/3-M from Telephone DB to telephone point in and including cost of 1"-Dia. PVC conduit recessed in slabs, floors, walls, columns or on slab above false ceiling or as required as per site conditions, including cost of 1-Telephone socket make Clipsal or 3-M, all necessary materials and accessories , complete in all respect. | 26.00 | Nos. |  |  |  |
|    | -   |       |      |  |  |  |
| 27 | Supply, Installation & Connection up of following sizes 16-SWG sheet steel with electrostatic painted wall & mounting, hinged door, vermin & dust proof telephone junction box (TJB) with connecting modules and marking arrangements for following Nos. of pairs of cables.  |       |      |  |  |  |
|    | 30-Pairs: Telephone Distribution Board  | 1.00  | Nos. |  |  |  |
|    | -   |       |      |  |  |  |
| 28 | Supply, Laying & Connection up of following size of telephone cable from TDB to TDB and TDB to PTCL Pole in appropriate size of pvc conduit & including all accessories. Complete with termination and tagging at both ends.approximate length of cables are shown herewith. Payments shall be made as per actual length installed.   |       |      |  |  |  |
|    | Telephone Cable @ 10-Pairs  | 85.00 | Rft  |  |  |  |
|    |   |       |      |  |  |  |
| 29 | Providing of Fluke Test Report & schneider /3M Certificate (Complete as per Client's requirement )  |       |      |  |  |  |
|    | Testing and Commissioning   | 1.00  | Nos. |  |  |  |
|    |   |       |      |  |  |  |
|    | <b><u>FIRE ALARM SYSTEM</u></b>   |       |      |  |  |  |
| 30 | Supply and wiring of smoke/ Heat detector and manual call point with 2C, 1.5 sq mm FR cable in and including 1" dia PVC pipe of Popular/ Polo complete with all accessories pull boxes junction boxes, etc, complete in all respect as per drawings and specification.  | 17.00 | Nos. |  |  |  |
|    |   |       |      |  |  |  |
| 31 | Same as per item above J.01 but wiring of electrostatic sounder with 2x2.5 sq mm cables in appropriate size of pvc conduit. complete in all respect as per drawings and specification.  | 3.00  | Nos. |  |  |  |
|    |   |       |      |  |  |  |
| 32 | Supply, installation & commissioning of Conventional Break Glass Type Manual call Station meeting EN54 Part-11 specifications. Compatibility All ZC conventional systems Wiring 2 Wire zonal Color . Red Mounting , Flush back box  | 3.00  | Nos. |  |  |  |
|    |   |       |      |  |  |  |
| 33 | Supply, installation & commissioning of Conventional multi sound electronic sounder with flasher flush with wall including back box meeting EN54 Part 3 specifications res in color and deliver 100 dBA .   | 3.00  | Nos. |  |  |  |
|    |   |       |      |  |  |  |

**Execution of Student Service Centre**

**Tender Documents**

|    |  |       |      |  |  |  |
|----|--|-------|------|--|--|--|
| 34 | Supply, installation & commissioning of Conventional optical photoelectric smoke detectors meeting EN54 Part-7 specifications Sensitivity 0.1 dV/m Wiring 2 wire zonal Open and short circuit and head out by active end of line unit Indication Alarm LED (red) Detection principle Photo electric light scattering.  | 13.00 | Nos. |  |  |  |
| 35 | Supply, installation & commissioning of Conventional optical photoelectric fixed temperature heat detectors meeting EN54 Part-5 specifications Sensitivity 0.1 dB/m Wiring 2 wire zonal Open and short circuit and head out by active and line unit. Indication Alarm LED(red ) Detection :58 deg C  | 1.00  | Nos. |  |  |  |
| 36 | Supply, installation & commissioning of Fire Alarm Panel 2 Zone Conventional Fire Alarm Control Panel. The panel shall be equipped with built in maintenance free sealed batteries having minimum 24 hours back up , The panel should be able to configure at site without additional hardware , complete with all mounting accessories. detectors, make Honey Well, GENT or Siemens, complete in all respects | 1.00  | Nos. |  |  |  |
| 37 | Supply, installation & commissioning of Conventional optical photoelectric fixed temperature heat detectors meeting EN54 Part-5 specifications Sensitivity 0.1 dB/m Wiring 2 wire zonal Open and short circuit and head out by active and line unit. Indication Alarm LED(red ) Detection :58 deg C  | 1.00  | Nos. |  |  |  |
| 38 | Supply, installation & commissioning of Fire Alarm Panel 2 Zone Conventional Fire Alarm Control Panel. The panel shall be equipped with built in maintenance free sealed batteries having minimum 24 hours back up , The panel should be able to configure at site without additional hardware , complete with all mounting accessories. detectors, make Honey Well, GENT or Siemens, complete in all respects | 1.00  | Nos. |  |  |  |
| 39 | Commissioning and training of Conventional Fire Alarm and Detection System, including submission of certified test report. including written warranties from the Principal Manufacturer.   | 1.00  | Job  |  |  |  |
|    | <b>PUBLIC ADDRESS SYSTEM</b>   |       |      |  |  |  |
| 40 | Supply and wiring of speakers from amplifier with 2 Nos. 3/029 cables in and including 1" dia Pvc recessed in slabs, in walls, columns, above false ceiling, or as required as per site conditions, including cost of all PVC conduit accessories, pull boxes, steel pull wires, including cost of all necessary accessories and materials, complete in  | 3.00  | Nos. |  |  |  |

**Execution of Student Service Centre**

**Tender Documents**

|    |  |        |      |  |  |  |
|----|--|--------|------|--|--|--|
|    | all respects.  |        |      |  |  |  |
| 41 | Supply & Installation of ceiling speakers 10 Watts make T-TOK (Taiwan). or equivalent, as approved by the engineer.  | 3.00   | Nos. |  |  |  |
| 42 | Supply & Installation of power amplifier 40 Watt with 2 zone selector panel.   | 1.00   | Nos. |  |  |  |
| 43 | Supply Installation of equipment rack as approved by the engineer. with steel and aluminum , front locked glass door.  | 13.00  | Nos. |  |  |  |
| 44 | Supply Installation of CD/USB Deck (Imported).   | 1.00   | Nos. |  |  |  |
| 45 | Testing and Commissioning  | 1.00   | Job  |  |  |  |
|    | <b>Queue Management System</b>   |        |      |  |  |  |
| 46 | Providing and Laying of 4 pair CAT-VI cables for Queue Management system from communication rack to each unit in including 1" dia PVC pipe of Popular/ Polo complete with all accessories pull boxes junction boxes, etc, complete in all respect as per drawings and specification. | 675.00 | Rft  |  |  |  |
| 47 | Supply & Installation, testing and commissioning of a QMS Server for the Controlling of the local devices such as counter displays, counter terminations etc. with all required accessories, etc complete in all respect.  | 1.00   | Nos. |  |  |  |
| 48 | Supply & Installation, testing and commissioning of a QMS 7" Touch type Token Printing Floor Standing Machine with all required accessories,etc complete in all respect.   | 1.00   | Nos. |  |  |  |
| 49 | Supply & Installation, testing and commissioning of a QMS Counter Display Unit with all required accessories, etc complete in all respect.   | 10.00  | Nos. |  |  |  |
| 50 | Supply & Installation, testing and commissioning of a QMS Push Button/ termination unit with all required accessories, etc complete in all respect.  | 10.00  | Nos. |  |  |  |
| 51 | Training, testing, commissioning and tagging of QMS system by Authorized representative of the manufacturer.   | 1.00   | Job  |  |  |  |
|    | <b>UPS Unit</b>  |        |      |  |  |  |

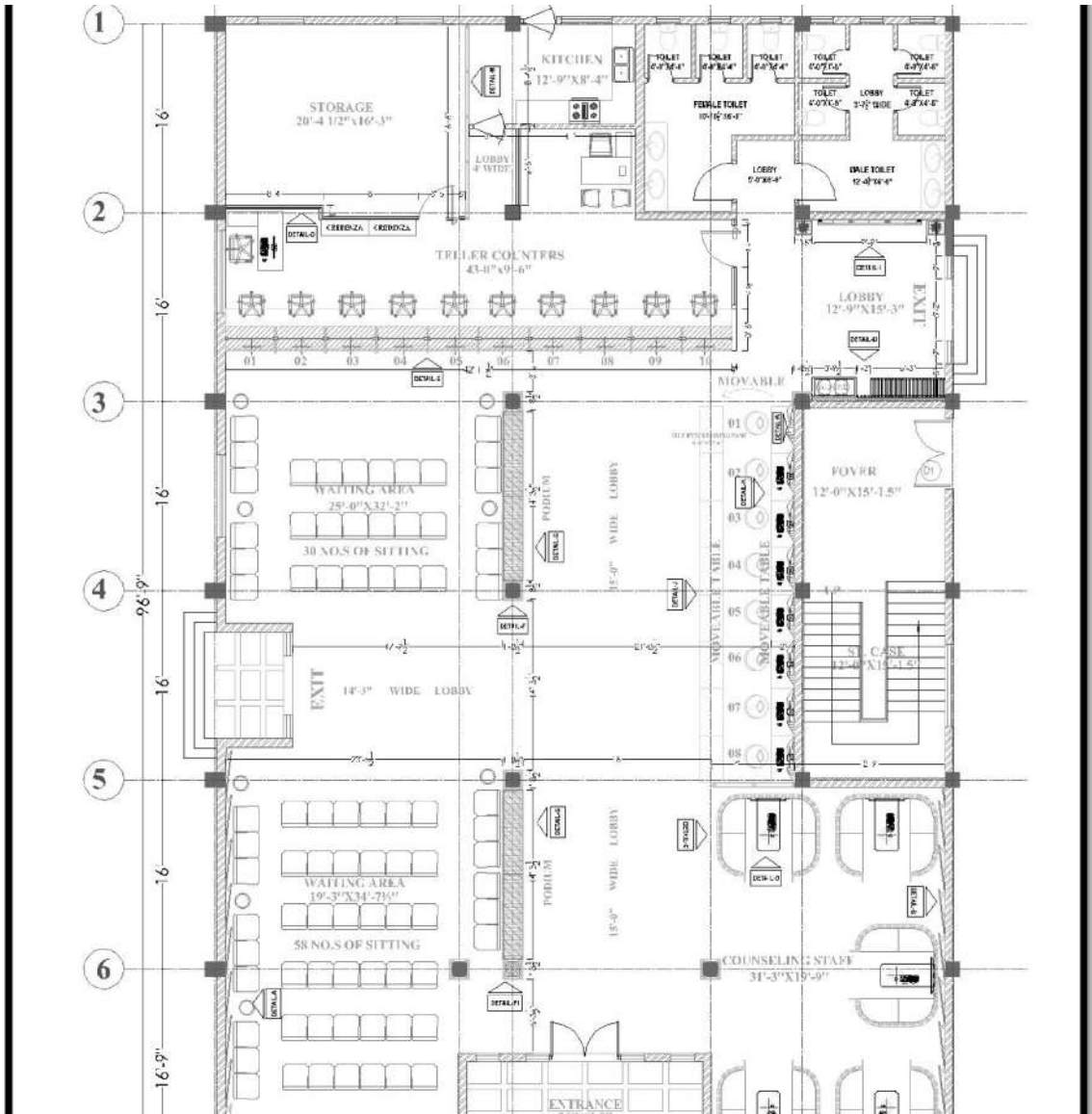
**Execution of Student Service Centre**

**Tender Documents**

|  |  |      |      |  |  |  |
|--|--|------|------|--|--|--|
| 52   | Supply Installation, testing & commission of 10 KVA UPS with Following Characteristics:<br>-Direct On-Line<br>-3 phase + neutral<br>-45-60 HZ 3 in 3 out<br>-Input pf 0.9 at 50% load<br>-Built-in Isolation transformer & By-Pass Switch<br>-Dry Type Cell Battery<br>with all required accessories, etc complete in all respect. | 1.00 | Nos. |  |  |  |
| <b>Total Cost of Electrical Works (Non MRS Items) Rs</b> |  |      |      |  |  |  |



Execution of Student Service Centre  
Tender Documents



**SCHEDULE - B TO BID**

**SPECIFIC WORKS DATA**

## SCHEDULE – C TO BID

### WORKS TO BE PERFORMED BY SUBCONTRACTORS

The bidder will do the work with his own forces except the work listed below which he intends to sub-contract.

| <b>Items of Works</b> | <b>Name and address of Sub-Contracted</b> | <b>Statement of similar to be Sub-Contractors works previously executed (attach evidence)</b> |
|-----------------------|---|---|
|-----------------------|---|---|

**Note:**

1. No change of Sub-Contractors shall be made by the bidder without prior approval of the Employer.
2. The truthfulness and accuracy of the statement as to the experience of Sub-Contractors is guaranteed by the bidder. The Employer's judgment shall be final as to the evaluation of the experience of Sub-Contractors submitted by the bidder.
3. Statement of similar works shall include description, location & value of works, year completed and name & address of the clients.

## **SCHEDULE – D TO BID**

### **PROPOSED PROGRAMME OF WORKS**

Bidder shall provide a programme in a bar-chart showing the sequence of work items by which he proposes to complete the Works of the entire Contract. The programme should indicate the sequence of work items and the period of time during which he proposes to complete the Works including the activities schedule of submittal of shop drawings, ordering and procurement of materials, manufacturing, delivering, construction of civil works, erection, testing and commissioning of Works to be supplied under the Contract.

## **SCHEDULE – E TO BID**

### **METHOD OF PERFORMING WORKS**

The bidder is required to submit a narrative outlining the method of performing the Works. The narrative should indicate in detail and include but not be limited to:

- The sequence and methods in which he proposes to carry out the Works, including the number of shifts per day and hours per shift, he expects to work.
  
- A list of all major items of constructional and Erectional plant, tools and vehicles proposed to be used in delivering/carrying out the Works at Site
  
- The procedure for installation of equipment and transportation of equipment and materials to the site.
  
- Organization chart indicating head office & field office personnel involved in management, supervision and Committee of the Works to be done under the Contract.

**SCHEDULE – F TO BID**

**(INTEGRITY PACT)**

**DECLARATION OF FEES, COMMISSION AND BROKERAGE ETC.  
PAYABLE BY THE SUPPLIERS OF GOODS, SERVICES & WORKS IN  
CONTRACTS WORTH RS. 10.00 MILLION OR MORE**

Contract No. \_\_\_\_\_ Dated \_\_\_\_\_

Contract Value: \_\_\_\_\_

Contract Title: \_\_\_\_\_

..... [name of Supplier] hereby declares that it has not obtained or induced the procurement of any contract, right, interest, privilege or other obligation or benefit from Government of Pakistan (GoP) or any administrative subdivision or agency thereof or any other entity owned or controlled by GoP through any corrupt business practice.

Without limiting the generality of the foregoing, [name of Supplier] represents and warrants that it has fully declared the brokerage, commission, fees etc. paid or payable to anyone and not given or agreed to give and shall not give or agree to give to anyone within or outside Pakistan either directly or indirectly through any natural or juridical person, including its affiliate, agent, associate, broker, consultant, director, promoter, shareholder, sponsor or subsidiary, any commission, gratification, bribe, finder's fee or kickback, whether described as consultation fee or otherwise, with the object of obtaining or inducing the procurement of a contract, right, interest, privilege or other obligation or benefit in whatsoever form from GoP, except that which has been expressly declared pursuant hereto.

[name of Supplier] certifies that it has made and will make full disclosure of all agreements and arrangements with all persons in respect of or related to the transaction with GoP and has not taken any action or will not take any action to circumvent the above declaration, representation or warranty.

[name of Supplier] accepts full responsibility and strict liability for making any false declaration, not making full disclosure, misrepresenting facts or taking any action likely to defeat the purpose of this declaration, representation and warranty. It agrees that any contract, right, interest, privilege or other obligation or benefit obtained or procured as aforesaid shall, without prejudice to any other rights and remedies available to GoP under any law, contract or other instrument, be voidable at the option of GoP.

**Execution of Student Service Centre**

**Tender Documents**

Notwithstanding any rights and remedies exercised by GoP in this regard, [name of Supplier] agrees to indemnify GoP for any loss or damage incurred by it on account of its corrupt business practices and further pay compensation to GoP in an amount equivalent to ten times the sum of any commission, gratification, bribe, finder's fee or kickback given by [name of Supplier] as aforesaid for the purpose of obtaining or inducing the procurement of any contract, right, interest, privilege or other obligation or benefit in whatsoever form from GoP.

Name of Buyer: .....

Name of Seller/Supplier: .....


Signature: .....

Signature: .....

[Seal]

[Seal]

**Execution of Student Service Centre  
Tender Documents**



**CONDITIONS OF CONTRACT**

## CONDITIONS OF CONTRACT

### 1. GENERAL PROVISIONS

#### 1.1 Definitions

In the Contract as defined below, the words and expressions defined shall have the following meanings assigned to them, except where the context requires otherwise:

##### **The Contract**

1.1.1 “Contract” means the Contract Agreement and the other documents listed in the Contract Data.

1.1.2 “Specifications” means the document as listed in the Contract Data, including Employer’s requirements in respect of design to be carried out by the Contractor (if any), and any Variation to such document.

1.1.3 “Drawings” means the Employer’s drawings of the Works as listed in the Contract Data, and any Variation to such drawings.

##### **Persons**

1.1.4 “Employer” means the person named in the Contract Data and the legal successors in title to this person, but not (except with the consent of the Contractor) any assignee.

1.1.5 “Contractor” means the person named in the Contract Data and the legal successors in title to this person, but not (except with the consent of the Employer) any assignee.

1.1.6 “Party” means either the Employer or the Contractor.

##### **Dates, Times and Periods**

1.1.7 “Commencement Date” means the date fourteen (14) days after the date the Contract comes into effect or any other date named in the Contract Data.

1.1.8 “Day” means a calendar day

1.1.9 “Time for Completion” means the time for completing the Works as stated in the Contract Data (or as extended under Sub-Clause 7.3), calculated from the Commencement Date.

##### **Money and Payments**

1.1.10 “Cost” means all expenditure properly incurred (or to be incurred) by the Contractor, whether on or off the Site, including overheads and similar charges but does not include any allowance for profit.



**Execution of Student Service Centre  
Tender Documents**

**Other Definitions**

- 1.1.11 “Contractor’s Equipment” means all machinery, apparatus and other things required for the execution of the Works but does not include Materials or Plant intended to form part of the Works.
- 1.1.12 “Country” means the Islamic Republic of Pakistan.
- 1.1.13 “Employer’s Risks” means those matters listed in Sub-Clause 6.1.
- 1.1.14 “Force Majeure” means an event or circumstance which makes performance of a Party’s obligations illegal or impracticable and which is beyond that Party’s reasonable control.
- 1.1.15 “Materials” means things of all kinds (other than Plant) to be supplied and incorporated in the Works by the Contractor.
- 1.1.16 “Plant” means the machinery and apparatus intended to form or forming part of the Works.
- 1.1.17 “Site” means the places provided by the Employer where the Works are to be executed, and any other places specified in the Contract as forming part of the Site.
- 1.1.18 “Variation” means a change which is instructed by the Committee under Sub-Clause 10.1.
- 1.1.19 “Works” means any or all the works whether Supply, Installation, Construction etc. and design (if any) to be performed by the Contractor including temporary works and any variation thereof.
- 1.1.20 “Committee” means the person notified by the Employer to act as Committee for the purpose of the Contract and named as such in Contract Data.

**1.2 Interpretation**

Words importing persons or parties shall include firms and organizations. Words importing singular or one gender shall include plural or the other gender where the context requires.

**1.3 Priority of Documents**

The documents forming the Contract are to be taken as mutually explanatory of one another. If an ambiguity or discrepancy is found in the documents, the priority of the documents shall be in accordance with the order as listed in the Contract Data.

**1.4 Law**

The law of the Contract is the relevant Law of Islamic Republic of Pakistan.

**1.5 Communications**

All Communications related to the Contract shall be in English language.

**Execution of Student Service Centre  
Tender Documents**

**1.6 Statutory Obligations**

The Contractor shall comply with the Laws of Islamic Republic of Pakistan and shall give all notices and pay all fees and other charges in respect of the Works.

**2. THE EMPLOYER**

**2.1 Provision of Site**

The Employer shall provide the Site and right of access thereto at the times stated in the Contract Data.

**2.2 Permits etc.**

The Employer shall, if requested by the Contractor, assist him in applying for permits, licenses or approvals which are required for the Works.

**2.3 Committee's/Employer's Instructions**

The Contractor shall comply with all instructions given by the Employer or the Committee, if notified by the Employer, in respect of the Works including the suspension of all or part of the Works.

**2.4 Approvals**

No approval or consent or absence of comment by the Consultant with consent of Committee shall affect the Contractor's obligations.

**3. COMMITTEE'S/EMPLOYER'S REPRESENTATIVES**

**3.1 Authorized Person**

The Employer shall appoint a duly authorized person to act for him and on his behalf for the purposes of this Contract. Such authorized person shall be duly identified in the Contract Data or otherwise notified in writing to the Contractor as soon as he is so appointed. In either case the Employer shall notify the Contractor, in writing, the precise scope of the authority of such authorized person at the time of his appointment.

**Execution of Student Service Centre  
Tender Documents**

### **3.2 Committee's/Employer's Representative**

The name and address of Committee's/Employer's Representative is given in Contract Data. However the Contractor shall be notified by the Committee, the delegated duties and authority before the Commencement of Works.

## **4. THE CONTRACTOR**

### **4.1 General Obligations**

The Contractor shall carry out the Works properly and in accordance with the Contract. The Contractor shall provide all supervision, labour, Materials, Plant and Contractor's Equipment which may be required.

### **4.2 Contractor's Representative**

The Contractor shall appoint a representative at site on full time basis to supervise the execution of work and to receive instructions on behalf of the Contractor but only after obtaining the consent of the Employer for such appointment which consent shall not be unreasonable withheld by the Employer. Such authorized representative may be substituted/replaced by the Contractor at any time during the Contract Period but only after obtaining the consent of the Employer as aforesaid.

### **4.3 Subcontracting**

The Contractor shall not subcontract the whole of the Works. The Contractor shall not subcontract any part of the Works without the consent of the Employer.

### **4.4 Performance Security**

The Contractor shall furnish to the Employer within fourteen (14) days after receipt of Letter of Acceptance a Performance Security at the option of the bidder, in the form of Bank Draft or Bank Guarantee for the amount and validity specified in Contract Data.

## **5. DESIGN BY CONTRACTOR**

### **5.1 Contractor 'Shall Follow Consultants Design.**

The Contractor shall carry out design to the extent specified, as referred to in the Contract Data. The Contractor shall promptly submit to the Consultant with consent of Committee all designs prepared by him. Within fourteen (14) days of receipt the Consultant with consent of

**Execution of Student Service Centre  
Tender Documents**

Committee shall notify any comments or, if the design submitted is not in accordance with the Contract, shall reject it stating the reasons. The Contractor shall not construct any element of the Works designed by him within fourteen (14) days after the design has been submitted to the Consultant with consent of Committee or which has been rejected. Design that has been rejected shall be promptly amended and resubmitted. The Contractor shall resubmit all designs commented on taking these comments into account as necessary.

## **5.2 Responsibility for Design**

The Contractor shall remain responsible for his bided design and the design under this Clause, both of which shall be fit for the intended purposes defined in the Contract and he shall also remain responsible for any infringement of any patent or copyright in respect of the same. The Consultant with consent of Committee shall be responsible for the Specifications and Drawings.

## **6. EMPLOYER'S RISKS**

### **6.1 The Employer's Risks**

The Employer's Risks are:-

- a) war, hostilities (whether war be declared or not), invasion, act of foreign enemies, within the Country;
- b) rebellion, terrorism, revolution, insurrection, military or usurped power, or civil war, within the Country;
- c) riot, commotion or disorder by persons other than the Contractor's personnel and other employees including the personnel and employees of Sub-Contractors, affecting the Site and/or the Works;
- d) Ionising radiations, or contamination by radio-activity from any nuclear fuel, or from any nuclear waste from the combustion of nuclear fuel, radio-active toxic explosive, or other hazardous properties of any explosive nuclear assembly or nuclear component of such an assembly, except to the extent to which the Contractor/Sub-Contractors may be responsible for the use of any radio-active material;
- e) Pressure waves caused by aircraft or other aerial devices travelling at sonic or supersonic speeds;
- f) use or occupation by the Employer of any part of the Works, except as may be specified in the Contract;

**Execution of Student Service Centre  
Tender Documents**

- g) late handing over of sites, anomalies in drawings, late delivery of designs and drawings of any part of the Works by the Employer's personnel or by others for whom the Employer is responsible;
- h) a suspension under Sub-Clause 2.3 unless it is attributable to the Contractor's failure; and
- i) Physical obstructions or physical conditions other than climatic conditions, encountered on the Site during the performance of the Works, for which the Contractor immediately notified to the Employer and accepted by the Employer.

## **7. TIME FOR COMPLETION**

### **7.1 Execution of the Works**

The Contractor shall commence the Works on the Commencement Date and shall proceed expeditiously and without delay and shall complete the Works, subject to Sub-Clause 7.3 below, within the Time for Completion.

### **7.2 Programme**

Within the time stated in the Contract Data, the Contractor shall submit to the Committee a programme for the Works on M.S Projects or Prima Vera software.

### **7.3 Extension of Time**

The Contractor shall, within such time as may be reasonable under the circumstances, notify the Employer/Committee of any event(s) falling within the scope of Sub-Clause 6.1 or 10.3 of these Conditions of Contract and request the Employer/Committee for a reasonable extension in the time for the completion of Works. Subject to the aforesaid, the Employer/Committee shall determine such reasonable extension in the time for the completion of Works as may be justified in the light of the details/particulars supplied by the Contractor in connection with the such determination by the Employer/Committee within such period as may be prescribed by the Employer/Committee for the same; and the Employer shall extend the Time for Completion as determined.

### **7.4 Late Completion**

If the Contractor fails to complete the Works within the Time for Completion, the Contractor's only liability to the Employer for such failure shall be to pay the amount stated in the Contract Data for each day for which he fails to complete the Works.

## **8. TAKING-OVER**

### **8.1 Completion**

The Contractor may notify the Consultant with consent of Committee when he considers that the Works are complete.

### **8.2 Taking-Over Notice**

Within fourteen (14) days of the receipt of the said notice of completion from the Contractor the Employer/Consultant with consent of Committee shall either takeover the completed Works and issue a Certificate of Completion to that effect or shall notify the Contractor his reasons for not taking-over the Works. While issuing the Certificate of Completion as aforesaid, the Employer/Committee may identify any outstanding items of work which the Contractor shall undertake during the Maintenance Period.

## **9. REMEDYING DEFECTS**

### **9.1 Remediating Defects**

The Contractor shall for a period stated in the Contract Data from the date of issue of the Certificate of Completion carry out, at no cost to the Employer, repair and rectification work which is necessitated by the earlier execution of poor quality of work or use of below specifications material in the execution of Works and which is so identified by the Employer/Consultant with consent of Committee in writing within the said period. Upon expiry of the said period, and subject to the Contractor's faithfully performing his aforesaid obligations, the Employer/Consultant with consent of Committee shall issue a Maintenance Certificate whereupon all obligations of the Contractor under this Contract shall come to an end.

Failure to remedy any such defects or complete outstanding work within a reasonable time shall entitle the Employer to carry out all necessary works at the Contractor's cost. However, the cost of remedying defects not attributable to the Contractor shall be valued as a Variation.

### **9.2 Uncovering and Testing**

The Consultant with consent of Committee may give instruction as to the uncovering and/or testing of any work. Unless as a result of an uncovering and/or testing it is established that the Contractor's design, Materials, Plant or workmanship are not in accordance with the Contract, the

**Execution of Student Service Centre  
Tender Documents**

Contractor shall be paid for such uncovering and/or testing as a Variation in accordance with Sub-Clause 10.2.

## **10. VARIATIONS AND CLAIMS**

### **10.1 Right to Vary**

The Employer/Consultant with consent of Committee may issue Variation Order(s) in writing. Where for any reason it has not been possible for the Employer/Consultant with consent of Committee to issue such Variations Order(s), the Contractor may confirm any verbal orders given by the Employer/Consultant with consent of Committee in writing and if the same are not refuted/denied by the Employer/Consultant with consent of Committee within seven (7) days of the receipt of such confirmation the same shall be deemed to be a Variation Orders for the purposes of this Sub-Clause.

### **10.2 Valuation of Variations**

Variations shall be valued as follows:

- a) at a lump sum price agreed between the Parties, or
- b) where appropriate, at rates in the Contract, or
- c) in the absence of appropriate rates, the rates in the Contract shall be used as the basis for valuation, or failing which
- d) at appropriate new rates, as may be agreed or which the Consultant with consent of Committee considers appropriate, or
- e) if the Consultant with consent of Committee so instructs, at day work rates set out in the Contract Data for which the Contractor shall keep records of hours of labour and Contractor's Equipment, and of Materials, used.

### **10.3 Early Warning**

The Contractor shall notify the Consultant with consent of Committee in writing as soon as he is aware of any circumstance which may delay or disrupt the Works, or which may give rise to a claim for additional payment.

To the extent of the Contractor's failure to notify, which results to the Consultant with consent of Committee being unable to keep all relevant records or not taking steps to minimize any delay, disruption, or Cost, or the value of any Variation, the Contractor's entitlement to extension of the Time for Completion or additional payment shall be reduced/rejected.

**Execution of Student Service Centre  
Tender Documents**

**10.4. Valuation of Claims**

If the Contractor incurs Cost as a result of any of the Employer's Risks, the Contractor shall be entitled to the amount of such Cost. If as a result of any Employer's Risk, it is necessary to change the Works, this shall be dealt with as a Variation subject to Contractor's notification for intention of claim to the Consultant with consent of Committee within fourteen (14) days of the occurrence of cause.

**10.5 Variation and Claim Procedure**

The Contractor shall submit to the Consultant with consent of Committee an itemized make-up of the value of variations and claims within twenty eight (28) days of the instruction or of the event giving rise to the claim. The Consultant with consent of Committee shall check and if possible agree the value. In the absence of agreement, the Employer shall determine the value.

**11. CONTRACT PRICE AND PAYMENT**

**11.1 (a) Terms of Payments**

The amount due to the Contractor under any Interim Payment Certificate issued by the Consultant with consent of Committee pursuant to this Clause, or to any other terms of the Contract, shall , subject to Clause 47, be paid by the Employer to the Contractor within 28 days after such Interim Payment Certificate has been jointly verified by Employer and Contractor, or, in the case of the Final Certificate referred to in Sub Clause 60.8, within 60 days after such Final Payment Certificate has been jointly verified by Employer and Contractor; Provided that the Interim Payment shall be caused in 42 days and Final Payment in 60 days in case of foreign funded project.

**(b) Valuation of the Works**

The Works shall be valued as provided for in the Contract Data, subject to Clause 10.

**11.2 Monthly Statements**

The Contractor shall be entitled to be paid at running bills:

- a) the value of the Works executed; and
- b) The percentage of the value of Materials and Plant reasonably delivered to the Site, as stated in the Contract Data, subject to any additions or deductions which may be due.



**Execution of Student Service Centre  
Tender Documents**

The Contractor shall submit each month to the Consultant with consent of Committee a statement showing the amounts to which he considers himself entitled.

**11.3 Interim Payments**

Within a period not exceeding seven (7) days from the date of submission of a statement for interim payment by the Contractor, the Consultant with consent of Committee shall verify the same and within a period not exceeding thirty (30) days from the said date of submission by the Contractor, the Employer shall pay to the Contractor the sum verified by the Consultant with consent of Committee less retention money at the rate stated in the Contract Data.

**11.4 Retention**

Retention money shall be paid by the Employer to the Contractor within fourteen (14) days after either the expiry of the period stated in the Contract Data, or the remedying of notified defects, or the completion of outstanding work, all as referred to in Sub-Clause 9.1, whichever is the later.

**11.5 Final Payment**

Within twenty one (21) days from the date of issuance of the Maintenance Certificate the Contractor shall submit a final account to the Consultant with consent of Committee to verify and the Consultant with consent of Committee shall verify the same within fourteen (14) days from the date of submission and forward the same to the Employer together with any Documentation reasonably required to enable the Employer to ascertain the final contract value.

Within sixty (60) days from the date of receipt of the verified final account from the Committee, the Employer shall pay to the Contractor any amount due to the Contractor. While making such payment the Employer may, for reasons to be given to the Contractor in writing, withhold any part or parts of the verified amount.

**11.6 Currency**

Payment shall be in the currency stated in the Contract Data.

**12. DEFAULT**

**12.1 Default by Contractor**

If the Contractor abandons the Works, refuses or fails to comply with a valid instruction of the Consultant with consent of Committee or fails to proceed expeditiously and without delay, or is,

**Execution of Student Service Centre  
Tender Documents**

despite a written complaint, in breach of the Contract, the Employer may give notice referring to this Sub-Clause and stating the default.

If the Contractor has not taken all practicable steps to remedy the default within fourteen (14) days after receipt of the Employer's notice, the Employer may by a second notice given within a further twenty one (21) days, terminate the Contract. The Contractor shall then demobilize from the Site leaving behind any Contractor's Equipment which the Employer instructs, in the second notice, to be used for the completion of the Works at the risk and cost of the Contractor.

### **12.2 Default by Employer**

If the Employer fails to pay in accordance with the Contract, or is, despite a written complaint, in breach of the Contract, the Contractor may give notice referring to this Sub-Clause and stating the default. If the default is not remedied within fourteen (14) days after the Employer's receipt of this notice, the Contractor may suspend the execution of all or parts of the Works.

If the default is not remedied within twenty eight (28) days after the Employer's receipt of the Contractor's notice, the Contractor may by a second notice given within a further twenty one (21) days, terminate the Contract. The Contractor shall then demobilise from the Site.

### **12.3 Insolvency**

If a Party is declared insolvent under any applicable law, the other Party may by notice terminate the Contract immediately. The Contractor shall then demobilise from the Site leaving behind, in the case of the Contractor's insolvency, any Contractor's Equipment which the Employer instructs in the notice is to be used for the completion of the Works.

### **12.4 Payment upon Termination**

After termination, the Contractor shall be entitled to payment of the unpaid balance of the value of the Works executed and of the Materials and Plant reasonably delivered to the Site, adjusted by the following:

- a) any sums to which the Contractor is entitled under Sub-Clause 10.4,
- b) any sums to which the Employer is entitled,
- c) if the Employer has terminated under Sub-Clause 12.1 or 12.3, the Employer shall be entitled to a sum equivalent to twenty percent (20%) of the value of parts of the Works not executed at the date of the termination, and

The net balance due shall be paid or repaid within twenty eight (28) days of the notice of termination.

## **13. RISKS AND RESPONSIBILITIES**

### **13.1 Contractor's Care of the Works**

Subject to Sub-Clause 9.1, the Contractor shall take full responsibility for the care of the Works from the Commencement Date until the date of the Employer's/Consultant with consent of Committee's issuance of Certificate of Completion under Sub-Clause 8.2. Responsibility shall then pass to the Employer. If any loss or damage happens to the Works during the above period, the Contractor shall rectify such loss or damage so that the Works conform with the Contract.

Unless the loss or damage happens as a result of any of the Employer's Risks, the Contractor shall indemnify the Employer, or his agents against all claims loss, damage and expense arising out of the Works.

### **13.2 Force Majeure**

If Force Majeure occurs, the Contractor shall notify the Consultant with consent of Committee immediately. If necessary, the Contractor may suspend the execution of the Works and, to the extent agreed with the Employer demobilise the Contractor's Equipment.

If the event continues for a period of eighty four (84) days, either Party may then give notice of termination which shall take effect twenty eight (28) days after the giving of the notice.

After termination, the Contractor shall be entitled to payment of the unpaid balance of the value of the Works executed and of the Materials and Plant reasonably delivered to the Site, adjusted by the following:

- a) any sums to which the Contractor is entitled under Sub-Clause 10.4,
- b) the cost of his demobilization, and
- c) less any sums to which the Employer is entitled.

The net balance due shall be paid or repaid within thirty five (35) days of the notice of termination.

## **14. INSURANCE**

### **14.1 Arrangements**

The Contractor shall, prior to commencing the Works, effect insurances of the types, in the amounts and naming as insured the persons stipulated in the Contract Data except for items (a) to (e) and (i) of the Employer's Risks under Sub-Clause 6.1. The policies shall be issued by insurers and in terms approved by the Employer. The Contractor shall provide the Consultant with consent

**Execution of Student Service Centre  
Tender Documents**

of Committee with evidence that any required policy is in force and that the premiums have been paid.

**14.2 Default**

If the Contractor fails to effect or keep in force any of the insurances referred to in the previous Sub-Clause, or fails to provide satisfactory evidence, policies or receipts, the Employer may, without prejudice to any other right or remedy, effect insurance for the cover relevant to such as a default and pay the premiums due and recover the same plus a sum in percentage given in Contractor Data from any other amounts due to the Contractor.

**15. RESOLUTION OF DISPUTES**

**15.1 Consultant with consent of Committee's Decision**

If a dispute of any kind whatsoever arises between the Employer and the Contractor in connection with the Works, the matter in dispute shall, in the first place, be referred in writing to the Consultant with consent of Committee, with a copy to the other party. Such reference shall state that it is made pursuant to this Clause. No later than the twenty eight (28) days after the day on which he received such reference, the Consultant with consent of Committee shall give notice of his decision to the Employer and the Contractor.

Unless the Contract has already been repudiated or terminated, the Contractor shall, in every case, continue to proceed with the Work with all due diligence, and the Contractor and the Employer shall give effect forthwith to every such decision of the Consultant with consent of Committee unless and until the same shall be revised, as hereinafter provided in an arbitral award.

**15.2 Notice of Dissatisfaction**

If a Party is dissatisfied with the decision of the Consultant with consent of Committee or if no decision is given within the time set out in Sub-Clause 15.1 here above, the Party may give notice of dissatisfaction referring to this Sub-Clause within fourteen (14) days of receipt of the decision or the expiry of the time for the decision. If no notice of dissatisfaction is given within the specified time, the decision shall be final and binding on the Parties. If notice of dissatisfaction is given within the specified time, the decision shall be binding on the Parties who shall give effect to it without delay unless and until the decision of the Consultant with consent of Committee is revised by an arbitrator.

**Execution of Student Service Centre  
Tender Documents**

**15.3 Arbitration**

A dispute which has been the subject of a notice of dissatisfaction shall be finally settled as per provisions of Arbitration Act 1940 (Act No. X of 1940) and Rules made thereunder and any statutory modifications thereto. Any hearing shall be held at the place specified in the Contract Data and in the language referred to in Sub-Clause 1.5.

**16 INTEGRITY PACT**

16.1 If the Contractor, or any of his Sub-Contractors, agents or servants is found to have violated or involved in violation of the Integrity Pact signed by the Contractor as Schedule-F to his Bid, then the Employer shall be entitled to:

- a) recover from the Contractor an amount equivalent to ten times the sum of any commission, gratification, bribe, finder's fee or kickback given by the Contractor or any of his Sub-Contractors, agents or servants;
- b) terminate the Contract; and
- c) recover from the Contractor any loss or damage to the Employer as a result of such termination or of any other corrupt business practices of the Contractor or any of his Sub-Contractors, agents or servants.

On termination of the Contract under Sub-Para (b) of this Sub-Clause, the Contractor shall demobilize from the Site leaving behind Contractor's Equipment which the Employer instructs, in the termination notice, to be used for the completion of the Works at the risk and cost of the Contractor. Payment upon such termination shall be made under Sub-Clause 12.4, in accordance with Sub-Para (c) thereof, after having deducted the amounts due to the Employer under Sub-Para (a) and (c) of this Sub-Clause.

## CONTRACT DATA

### Sub-Clauses of

#### Conditions of Contract

Employer's Drawings, if any

#### The Employer means

Islamia University Bahawalpur

**The Contractor** means a person, consultant, firm, company or an organization who undertakes to supply goods, services or works;

**Commencement Date** means the date of issue of Consultant with consent of Committee's Notice to Commence which shall be issued within fourteen (14) days of the signing of the Contract Agreement.

**Time for Completion:** (21) days

#### Consultant with consent of Committee

Nominated by the Employer

#### Documents forming the Contract listed in the order of priority:

- a) The Contract Agreement
- b) Letter of Acceptance
- c) The completed Form of Bid
- d) Contract Data
- e) Conditions of Contract
- f) The completed Schedules to Bid including Schedule of Prices
- g) The Drawings, if any
- h) The Specifications
- i) \_\_\_\_\_
- j) \_\_\_\_\_

**Provision of Site:** On the Commencement Date\*

**Authorized person :** \_\_\_\_\_

**Name and address of Consultant with consent of Committee's/Employer's representative**

Nominated by the Employer

**Performance Security:**

**Execution of Student Service Centre  
Tender Documents**

Amount: 5% of bid price

Validity: upto date of completion

**Requirements for Contractor's design** (if any):

Specification Clause No's \_\_\_\_\_

**Programme:**

**Time for submission:** As agreed by both parties

Form of programme:

**Amount payable due to failure to complete** shall be 0.1% per day sum stated in the Letter of Acceptance

**Period for remedying defects**

Three (03) Months

**Percentage of retention: five (5%)**

**Currency of payment: Pak. Rupees**

**Insurances:**

**Type of cover**

The Works

**Amount of cover**

The sum stated in the Letter of Acceptance plus fifteen percent (15%)

**Type of cover**

Contractor's Equipment:

**Amount of cover**

Full replacement cost

**Type of cover**

Third Party-injury to persons and damage to property

**Arbitration**

Place of Arbitration: Bahawalpur

**Penalty**

A penalty of .1% of bid amount shall be charged per day, if the contractor will not complete the work in the specified time.

## FORM OF BID SECURITY

(Bank Guarantee)

Guarantee No. \_\_\_\_\_

Executed on \_\_\_\_\_

(Letter by the Guarantor to the Employer)

Name of Guarantor (Scheduled Bank in Pakistan) with address: \_\_\_\_\_

Name of Principal (Bidder) with address: \_\_\_\_\_

Penal Sum of Security (express in words and figures): \_\_\_\_\_

Bid Reference No. \_\_\_\_\_ Date of Bid \_\_\_\_\_

KNOW ALL MEN BY THESE PRESENTS, that in pursuance of the terms of the Bid and at the request of the said Principal, we the Guarantor above-named are held and firmly bound unto the \_\_\_\_\_, (hereinafter called The "Employer") in the sum stated above, for the payment of which sum well and truly to be made, we bind ourselves, our heirs, executors, administrators and successors, jointly and severally, firmly by these presents.

THE CONDITION OF THIS OBLIGATION IS SUCH, that whereas the Principal has submitted the accompanying Bid numbered and dated as above for \_\_\_\_\_ (Particulars of Bid) to the said Employer; and

WHEREAS, the Employer has required as a condition for considering the said Bid that the Principal furnishes a Bid Security in the above said sum to the Employer, conditioned as under:

(1) that the Bid Security shall remain valid for a period of twenty eight (28) days beyond the period of validity of the bid;

(2) that in the event of;

(a) the Principal withdraws his Bid during the period of validity of Bid, or

(b) the Principal does not accept the correction of his Bid Price, pursuant to Sub-Clause 16.4 (b) of Instructions to Bidders, or

(c) failure of the successful bidder to

(i) furnish the required Performance Security, in accordance with Sub-Clause IB-21.1 of Instructions to Bidders, or

(ii) sign the proposed Contract Agreement, in accordance with Sub-Clauses IB-20.2 & 20.3 of Instructions to Bidders,

the entire sum be paid immediately to the said Employer for delayed completion and not as penalty for the successful bidder's failure to perform.

NOW THEREFORE, if the successful bidder shall, within the period specified therefore, on the prescribed form presented to him for signature enter into a formal Contract Agreement with the said Employer in accordance with his Bid as accepted and furnish within fourteen (14) days of



**Execution of Student Service Centre**

**Tender Documents**

receipt of Letter of Acceptance, a Performance Security with good and sufficient surety , as may be required, upon the form prescribed by the said Employer for the faithful performance and proper fulfillment of the said Contract or in the event of non-withdrawal of the said Bid within the time specified then this obligation shall be void and of no effect, but otherwise to remain in full force and effect.

PROVIDED THAT the Guarantor shall forthwith pay to the Employer the said sum stated above upon first written demand of the Employer without cavil or argument and without requiring the Employer to prove or to show grounds or reasons for such demand, notice of which shall be sent by the Employer by registered post duly addressed to the Guarantor at its address given above.

PROVIDED ALSO THAT the Employer shall be the sole and final judge for deciding whether the Principal has duly performed his obligations to sign the Contract Agreement and to furnish the requisite Performance Security within the time stated above, or has defaulted in fulfilling said requirements and the Guarantor shall pay without objection the sum stated above upon first written demand from the Employer forthwith and without any reference to the Principal or any other person.

IN WITNESS WHEREOF, the above bounded Guarantor has executed the instrument under its seal on the date indicated above, the name and seal of the Guarantor being hereto affixed and these presents duly signed by its undersigned representative pursuant to authority of its governing body.

\_\_\_\_\_  
**Guarantor (Bank)**

Witness:

1. \_\_\_\_\_

1. Signature \_\_\_\_\_

\_\_\_\_\_

2. Name \_\_\_\_\_

Corporate Secretary (Seal)

3. Title \_\_\_\_\_

2. \_\_\_\_\_

Corporate Guarantor (Seal)

\_\_\_\_\_

(Name, Title & Address)

## FORM OF PERFORMANCE SECURITY

(Bank Guarantee)

Guarantee No. \_\_\_\_\_

Executed on \_\_\_\_\_

(Letter by the Guarantor to the Employer)

Name of Guarantor (Scheduled Bank in Pakistan) with  
address: \_\_\_\_\_

Name of Principal (Contractor) with  
address: \_\_\_\_\_

Penal Sum of Security (express in words and  
figures) \_\_\_\_\_

Letter of Acceptance No. \_\_\_\_\_ Dated \_\_\_\_\_

KNOW ALL MEN BY THESE PRESENTS, that in pursuance of the terms of the Bidding Documents and above said Letter of Acceptance (hereinafter called the Documents) and at the request of the said Principal we, the Guarantor above named, are held and firmly bound unto the \_\_\_\_\_ (hereinafter called the Employer) in the penal sum of the amount stated above, for the payment of which sum well and truly to be made to the said Employer, we bind ourselves, our heirs, executors, administrators and successors, jointly and severally, firmly by these presents.

THE CONDITION OF THIS OBLIGATION IS SUCH that whereas the Principal has accepted the Employer's above said Letter of Acceptance for \_\_\_\_\_ (Name of Contract) for the \_\_\_\_\_ (Name of Project).

NOW THEREFORE, if the Principal (Contractor) shall well and truly perform and fulfill all the undertakings, covenants, terms and conditions of the said Documents during the original terms of the said Documents and any extensions thereof that may be granted by the Employer, with or without notice to the Guarantor, which notice is, hereby, waived and shall also well and truly perform and fulfill all the undertakings, covenants terms and conditions of the Contract and of any and all modifications of the said Documents that may hereafter be made, notice of which modifications to the Guarantor being hereby waived, then, this obligation to be void; otherwise to remain in full force and virtue till all requirements of Clause 9, Remedying Defects, of Conditions of Contract are fulfilled.

Our total liability under this Guarantee is limited to the sum stated above and it is a condition of any liability attaching to us under this Guarantee that the claim for payment in writing shall be received by us within the validity period of this Guarantee, failing which we shall be discharged of our liability, if any, under this Guarantee.

**Execution of Student Service Centre**

**Tender Documents**

We, \_\_\_\_\_ (the Guarantor), waiving all objections and defenses under the Contract, do hereby irrevocably and independently guarantee to pay to the Employer without delay upon the Employer's first written demand without cavil or arguments and without requiring the Employer to prove or to show grounds or reasons for such demand any sum or sums up to the amount stated above, against the Employer's written declaration that the Principal has refused or failed to perform the obligations under the Contract, for which payment will be effected by the Guarantor to Employer's designated Bank & Account Number.

PROVIDED ALSO THAT the Employer shall be the sole and final judge for deciding whether the Principal (Contractor) has duly performed his obligations under the Contract or has defaulted in fulfilling said obligations and the Guarantor shall pay without objection any sum or sums up to the amount stated above upon first written demand from the Employer forthwith and without any reference to the Principal or any other person.

IN WITNESS WHEREOF, the above bounded Guarantor has executed this Instrument under its seal on the date indicated above, the name and corporate seal of the Guarantor being hereto affixed and these presents duly signed by its undersigned representative, pursuant to authority of its governing body.

\_\_\_\_\_  
**Guarantor (Bank)**

Witness:

1. \_\_\_\_\_  
\_\_\_\_\_

1. Signature \_\_\_\_\_

2. Name \_\_\_\_\_

Corporate Secretary (Seal)

3. Title \_\_\_\_\_

2. \_\_\_\_\_  
\_\_\_\_\_

Corporate Guarantor (Seal)

(Name, Title & Address)

## FORM OF CONTRACT AGREEMENT

THIS CONTRACT AGREEMENT (hereinafter called the "Agreement") made on the \_\_\_\_ day of \_\_\_\_\_ 2013 between \_\_\_\_\_ (hereinafter called the "Employer") of the one part and \_\_\_\_\_ (hereinafter called the "Contractor") of the other part.

WHEREAS the Employer is desirous that certain Works, viz \_\_\_\_\_ should be executed by the Contractor and has accepted a Bid by the Contractor for the execution and completion of such Works and the remedying of any defects therein.

NOW this Agreement witnessed as follows:

1. In this Agreement words and expressions shall have the same meanings as are respectively assigned to them in the Conditions of Contract hereinafter referred to.

2. The following documents after incorporating addenda, if any except those parts relating to Instructions to Bidders, shall be deemed to form and be read and construed as part of this Agreement, viz:

- a) The Letter of Acceptance;
- b) The completed Form of Bid along with Schedules to Bid;
- c) Conditions of Contract & Contract Data;
- d) The priced Schedule of Prices;
- e) The Specifications; and
- f) The Drawings

3. In consideration of the payments to be made by the Employer to the Contractor as hereinafter mentioned, the Contractor hereby covenants with the Employer to execute and complete the Works and remedy defects therein in conformity and in all respects within the provisions of the Contract.

4. The Employer hereby covenants to pay the Contractor, in consideration of the execution and completion of the Works as per provisions of the Contract, the Contract Price or such other sum as may become payable under the provisions of the Contract at the times and in the manner prescribed by the Contract.

IN WITNESS WHEREOF the parties hereto have caused this Contract Agreement to be executed on the day, month and year first before written in accordance with their respective laws.

**Execution of Student Service Centre**

**Tender Documents**

Signature of the Contactor

\_\_\_\_\_

(Seal)

Signature of the Employer

\_\_\_\_\_

(Seal)

Signed, Sealed and Delivered in the presence of:

Witness:

\_\_\_\_\_

(Name, Title and Address)

Witness:

\_\_\_\_\_

(Name, Title and Address)

## FORM OF BANK GUARANTEE FOR ADVANCE PAYMENT

Guarantee No. \_\_\_\_\_

Executed on \_\_\_\_\_

(Letter by the Guarantor to the Employer)

WHEREAS the \_\_\_\_\_ (hereinafter called the Employer) has entered into a Contract for \_\_\_\_\_

\_\_\_\_\_ (Particulars of Contract), with

\_\_\_\_\_ (hereinafter called the Contractor).

AND WHEREAS the Employer has agreed to advance to the Contractor, at the Contractor's request, an amount of Rs. \_\_\_\_\_ Rupees \_\_\_\_\_) which amount shall be advanced to the Contractor as per provisions of the Contract.

AND WHEREAS the Employer has asked the Contractor to furnish Guarantee to secure the advance payment for the performance of his obligations under the said Contract.

AND WHEREAS \_\_\_\_\_ (Scheduled Bank) (hereinafter called the Guarantor) at the request of the Contractor and in consideration of the Employer agreeing to make the above advance to the Contractor, has agreed to furnish the said Guarantee.

NOW THEREFORE the Guarantor hereby guarantees that the Contractor shall use the advance for the purpose of above mentioned Contract and if he fails, and commits default in fulfillment of any of his obligations for which the advance payment is made, the Guarantor shall be liable to the Employer for payment not exceeding the aforementioned amount.

Notice in writing of any default, of which the Employer shall be the sole and final judge, as aforesaid, on the part of the Contractor, shall be given by the Employer to the Guarantor, and on such first written demand payment shall be made by the Guarantor of all sums then due under this Guarantee without any reference to the Contractor and without any objection.

This Guarantee shall come into force as soon as the advance payment has been credited to the account of the Contractor.

This Guarantee shall expire not later than \_\_\_\_\_

**Execution of Student Service Centre**

**Tender Documents**

by which date we must have received any claims by registered letter, telegram, telex or telefax.

It is understood that you will return this Guarantee to us on expiry or after settlement of the total amount to be claimed hereunder.

\_\_\_\_\_  
**Guarantor (Scheduled Bank)**

Witness:

1. \_\_\_\_\_

1. Signature \_\_\_\_\_

\_\_\_\_\_

2. Name \_\_\_\_\_

Corporate Secretary (Seal)

3. Title \_\_\_\_\_

2. \_\_\_\_\_

Corporate Guarantor (Seal)

\_\_\_\_\_

(Name, Title & Address)